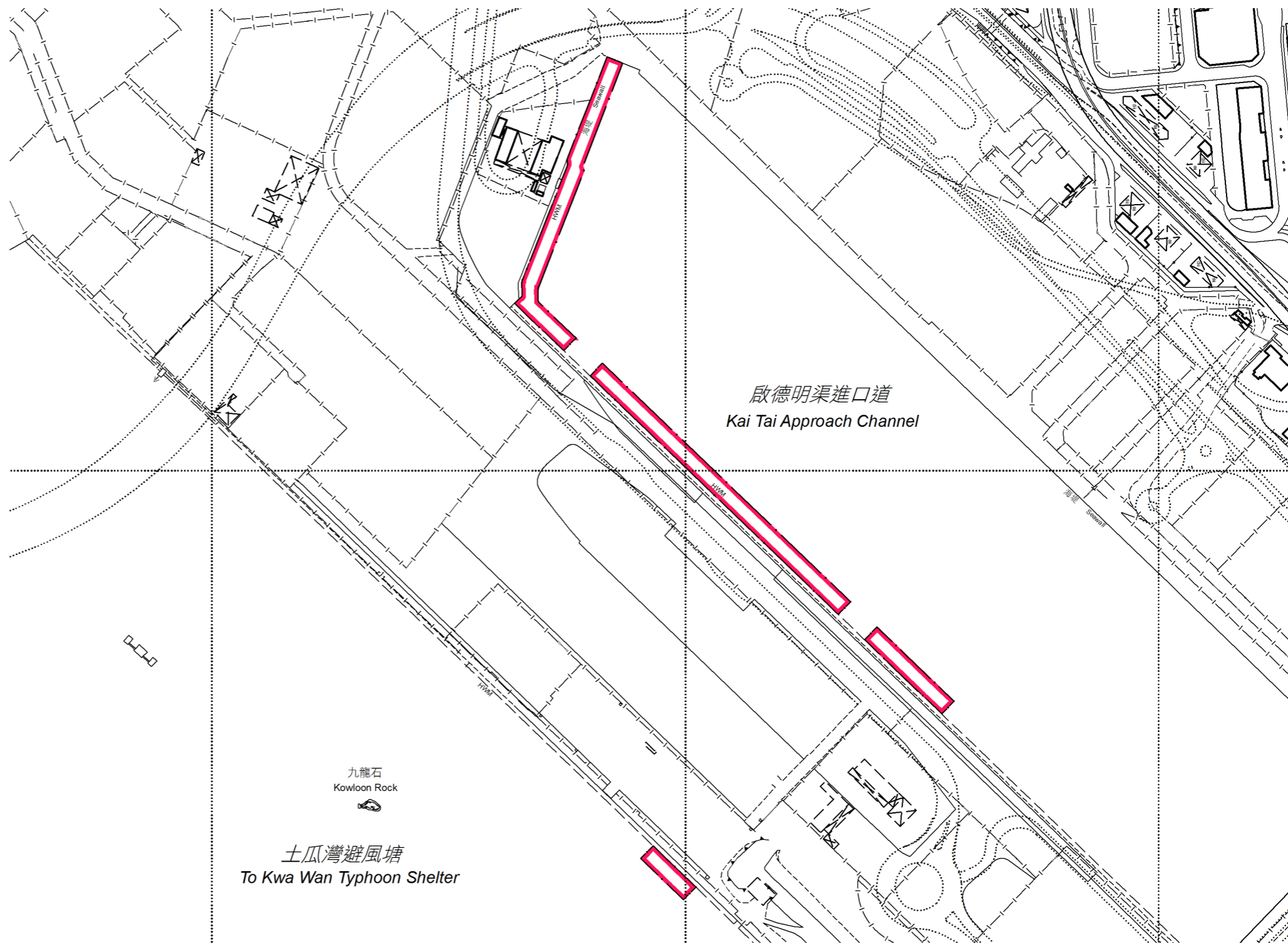


比例 SCALE 1:20 000

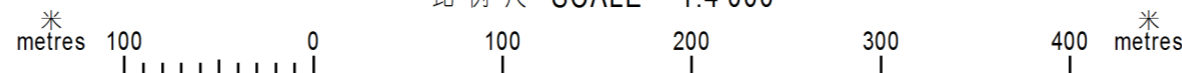
圖例 LEGEND

 受影響的前濱及海床範圍  
FORESHORE AND SEA-BED AFFECTED



以紅色邊線標示的面積約為 10 400 平方米 EDGED RED AREA 10 400 SQUARE METRES (ABOUT)

比例尺 SCALE 1:4 000



已簽署 Signed  
(慕容漢 Tony MOYUNG)  
副署長(專業事務) Deputy Director / Specialist  
地政總署 Lands Department  
08/12/2017  
圖則由九龍測量處繪製  
Plan Prepared by District Survey Office, Kowloon  
© 香港特別行政區政府 版權所有 Copyright reserved - Hong Kong SAR Government

前濱及海床(填海工程)條例(第127章)  
工務計劃項目第7702CL號(部分)  
啟德發展計劃 - 前跑道及南面停機坪第四期基礎設施  
在啟德前跑道建造海濱長廊及海水進水口  
FORESHORE AND SEA-BED (RECLAMATIONS) ORDINANCE (CHAPTER 127)  
PUBLIC WORKS PROGRAMME ITEM NO. 7702CL (PART)  
KAI TAK DEVELOPMENT - STAGE 4 INFRASTRUCTURE AT THE FORMER RUNWAY AND SOUTH APRON  
CONSTRUCTION OF WATERFRONT PROMENADE AND SEAWATER INTAKE POINT AT FORMER KAI TAK RUNWAY

檔案編號 File No. DSO/K W654/1 IV  
測量圖編號 Survey Sheet No. 11-NE-16B,16D,17A&17C  
發展藍圖編號 Layout Plan No. ---  
參考圖編號 Reference Plan No. ---  
圖則編號 PLAN No. KM9910

日期 Date: 05/12/2017