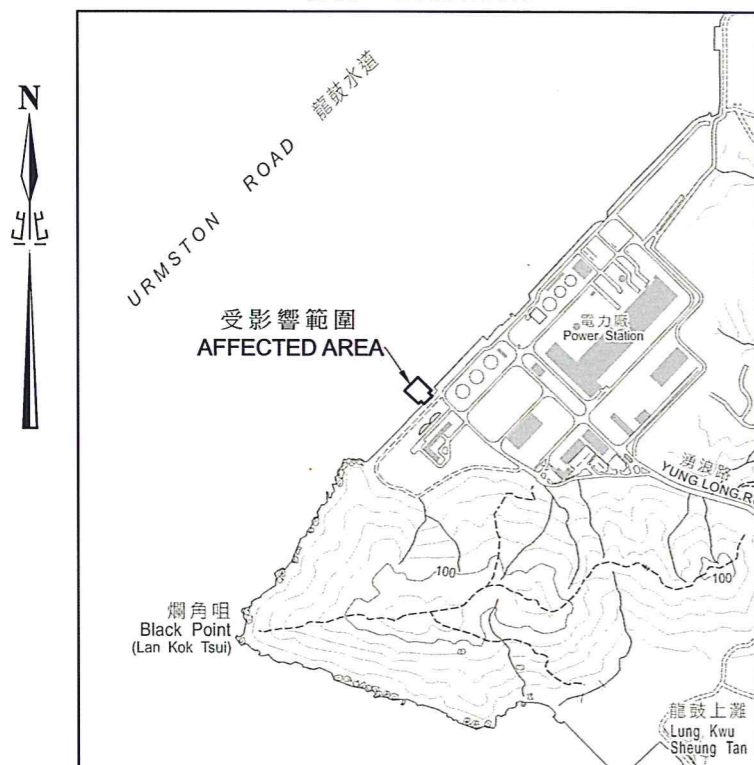


位置 LOCATION



比例 SCALE 1:20000

圖例 LEGEND

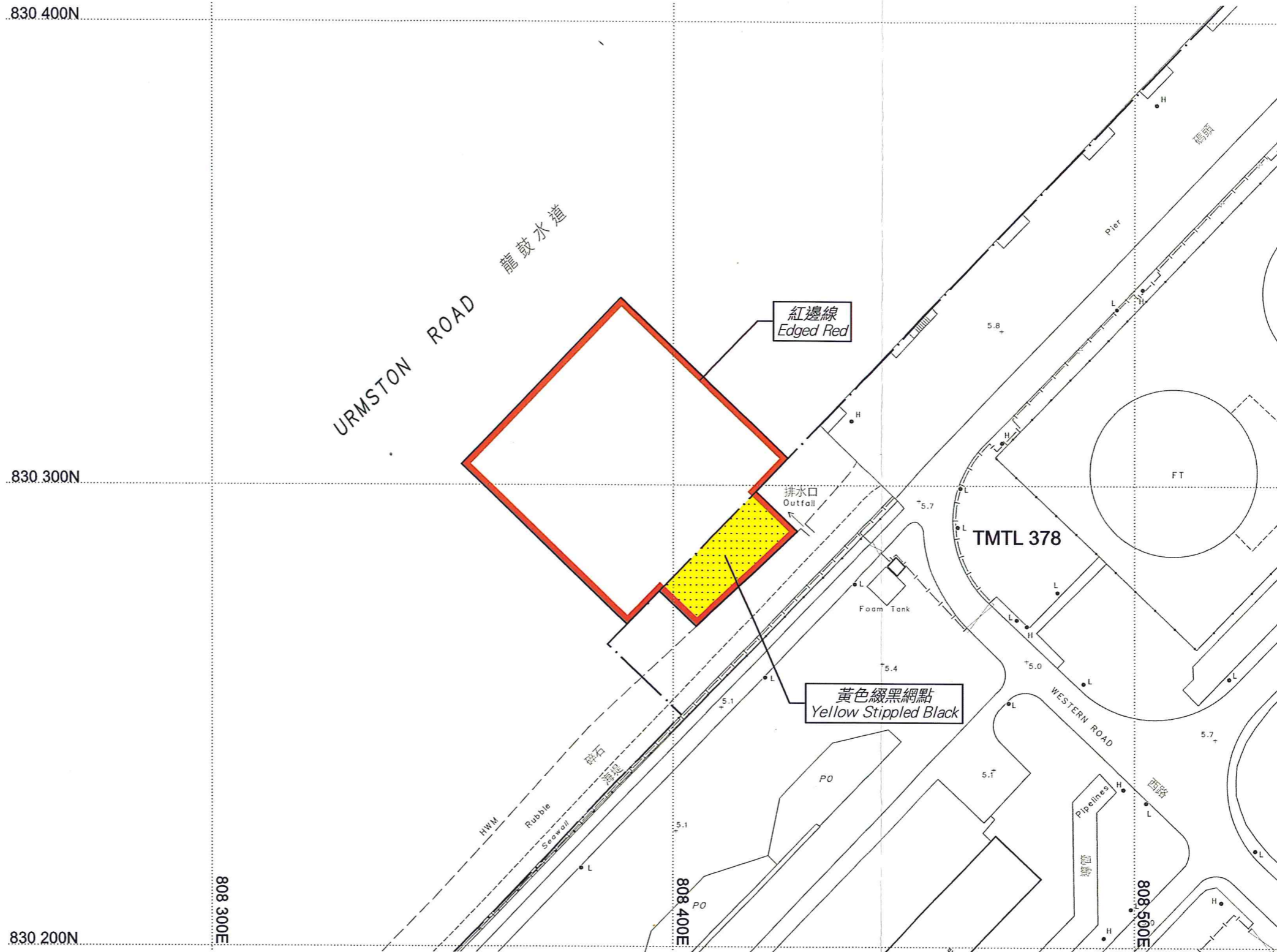
-  受影響的前濱及海床範圍
FORESHORE AND SEA-BED AFFECTED
-  將喪失所有權利的私人土地
PRIVATE LAND TO BE EXTINGUISHED OF RIGHTS
-  地段界線
LOT BOUNDARY

將喪失所有權利的私人土地 Private Land to be Extinguished of Rights	
屯門市地段 TMTL No.	378(P)
面積 Area	約353.5平方米 353.5 square metres (about)

TMTL 屯門市地段
TUEN MUN TOWN LOT

(P) 部分
PORTION

以紅色邊線標示的面積約為 2 853.5 平方米 EDGED RED AREA 2 853.5 SQUARE METRES (ABOUT)



Signed

(C S Mills)
副署長 (專業事務) Deputy Director / Specialist
地政總署
Lands Department
圖則由屯門測量處繪製
Plan Prepared by District Survey Office, Tuen Mun
© 香港特別行政區政府 版權所有 Copyright reserved - Hong Kong SAR Government

前濱及海床(填海工程)條例(第127章)
擬建於新界屯門龍鼓灘發電廠的輔助海水泵房
FORESHORE AND SEA-BED (RECLAMATIONS) ORDINANCE (CHAPTER 127)
PROPOSED SUPPLEMENTARY SEAWATER PUMPING STATION
AT BLACK POINT POWER STATION, TUEN MUN, NEW TERRITORIES

檔案編號 File No. DLOTM 230/3/427A
測量圖編號 Survey Sheet No. 5-NE-21D
發展藍圖編號 Layout Plan No. -----
參考圖編號 Reference Plan No. 2938/BV/03/00
圖則編號 PLAN No. TMM3443b