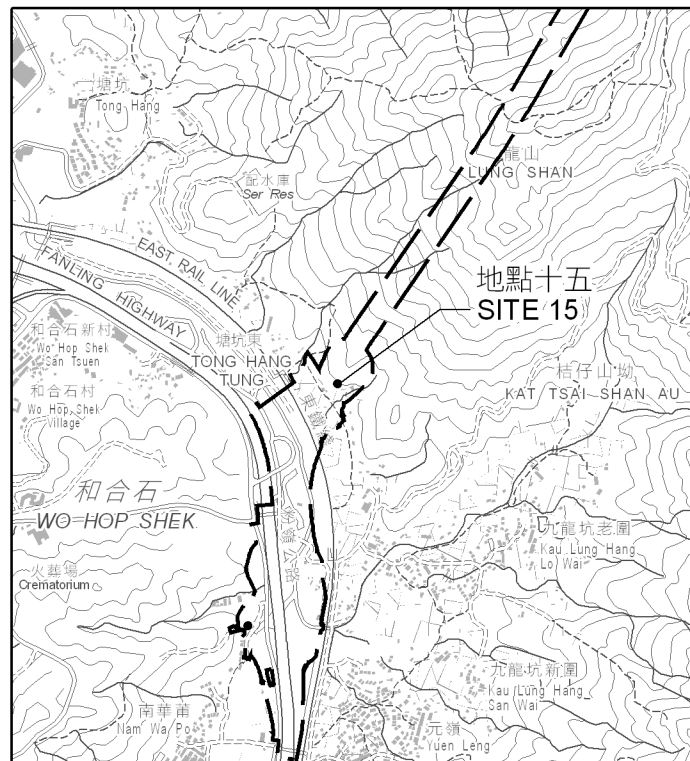


位置 LOCATION

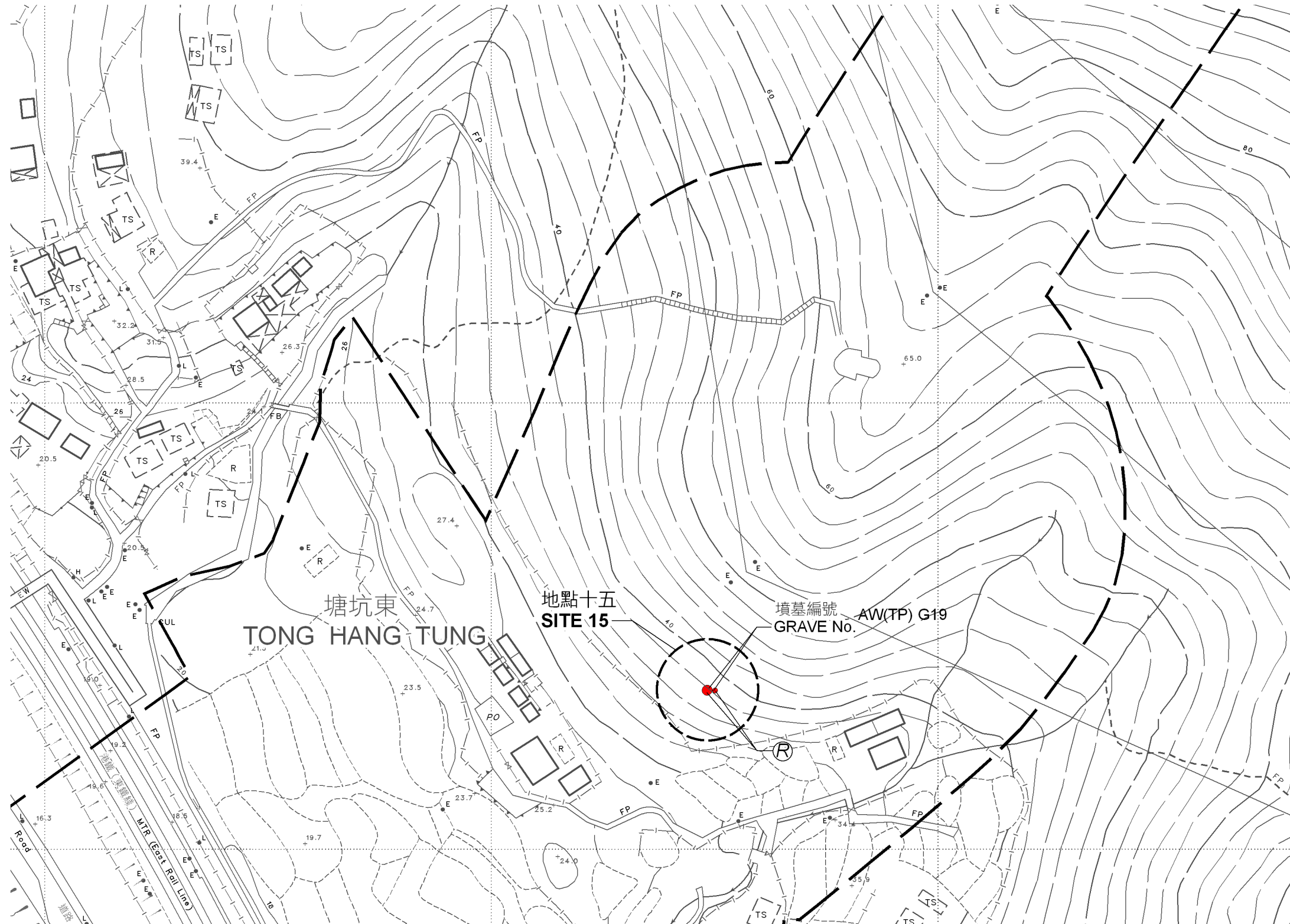


比例 SCALE 1:20000

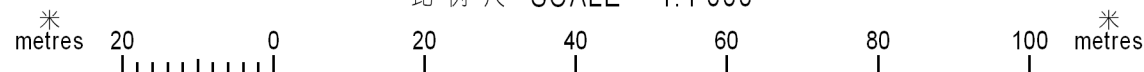
圖例 LEGEND

- 施工區界限
LIMITS OF WORKS AREA
- 將予徵用的土地
LAND TO BE ACQUIRED
- 紅色
RED

將予徵用土地的面積 AREA OF LAND TO BE ACQUIRED		
地點編號 SITE No.	墳墓編號 GRAVE No.	平方米(約數) m ² (ABOUT)
地點十五 SITE 15	AW(TP) G19	4.0



比例尺 SCALE 1:1 000



只作識別用
FOR IDENTIFICATION PURPOSES ONLY

Signed

(蔣翠雲 Ms Sophia CHIANG)
北區地政專員 District Lands Officer, North
日期 Date 02/05/2012

地政總署 北區地政處
District Lands Office, North
Lands Department
圖則由北區測量處繪製
Plan Prepared by District Survey Office, North

© 香港特別行政區政府 一版權所有 Copyright reserved - Hong Kong SAR Government

土地徵用圖則
土地徵用(管有業權)條例(第130章)
徵用土地以進行
蓮塘/香園圍口岸與相關工程計劃

LAND ACQUISITION PLAN
LAND ACQUISITION (POSSESSORY TITLE) ORDINANCE (CHAPTER 130)
ACQUISITION OF LAND FOR THE IMPLEMENTATION OF
LIANTANG / HEUNG YUEN WAI BOUNDARY CONTROL POINT AND ASSOCIATED WORKS PROJECT

檔案編號 File No. L/M(2) in DLON 3/27/09

測量圖編號 Survey Sheet No. 3-NW-13D & 18B

參考圖編號 Ref. Plan No. 255228/GZP/1000A, 1001A, 1002A, 1003, 1004A, 1005, 1006, 1007A, 1008A, 1009, 1010A, 1011, 1012A, 1013, 1014A, 1015A, 1016A AND 1017A (土木工程拓展署) (CEDD)

圖則編號 PLAN No. DNM2595a (第八張 共九張) (Sheet 8 of 9)

日期 Date : 06/03/2012