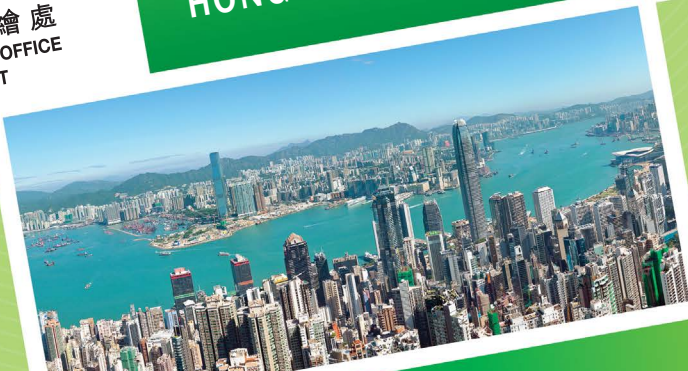




# 香港地圖目錄

HONG KONG MAP CATALOGUE

地政總署測繪處  
SURVEY & MAPPING OFFICE  
LANDS DEPARTMENT





**地圖銷售處**  
**Map Sales Outlets**

[www.landsd.gov.hk/tc/about-us/sales-outlets.html](http://www.landsd.gov.hk/tc/about-us/sales-outlets.html)



**測繪處詢問熱線**  
**Survey and Mapping Office**  
**Enquiry Hotline**

**(852) 2231 3187**



**香港地圖服務網站**  
**Hong Kong Map Service Website**

[www.hkmapservice.gov.hk](http://www.hkmapservice.gov.hk)



**香港地圖銷售處\***

附設地圖資料室

**Map Publications Centre, Hong Kong\***

with Map Library

香港北角渣華道333號

北角政府合署6樓 (港鐵鰂魚涌站, C出口)

6/F, North Point Government Offices

333 Java Road, North Point, H.K.

(MTR-Quarry Bay Station, Exit C)

電話 Tel 2231 3187

傳真 Fax 2116 0774

電郵 Email [smosale1@landsd.gov.hk](mailto:smosale1@landsd.gov.hk)

**九龍地圖銷售處\***

**Map Publications Centre, Kowloon\***

九龍油麻地彌敦道382號

382 Nathan Road, Yau Ma Tei, Kln.

電話 Tel 2231 3187

傳真 Fax 2783 7228

電郵 Email [smosale1@landsd.gov.hk](mailto:smosale1@landsd.gov.hk)

**北區測量處**

**District Survey Office, North**

新界粉嶺璧峰路3號北區政府合署5樓

5/F, North District Government Offices

3 Pik Fung Road, Fanling, N.T.

傳真 Fax 2675 0202

電郵 Email [slsn@landsd.gov.hk](mailto:slsn@landsd.gov.hk)

**元朗測量處**

**District Survey Office, Yuen Long**

新界元朗元政路2號

2 Yuen Ching Road, Yuen Long, N.T.

傳真 Fax 2473 6996

電郵 Email [slsyl@landsd.gov.hk](mailto:slsyl@landsd.gov.hk)



**地政總署測繪處**  
**SURVEY & MAPPING OFFICE**  
**LANDS DEPARTMENT**

**地政總署測繪處** 是香港特別行政區負責繪製地圖的部門，專責製作及出版多類不同比例的地圖，以配合政府、私營機構及市民大眾在施政、規劃發展、教育及郊遊各方面的需要。本冊子印有地圖樣本，簡單介紹各類地圖產品，並在其下方以毫米為單位標示原圖尺寸。部份彩色地圖亦有黑白版本發售。欲知最新的地圖產品及銷售處詳細資料可瀏覽網頁：[www.landsd.gov.hk/mapping/tc/pro&ser/index.htm](http://www.landsd.gov.hk/mapping/tc/pro&ser/index.htm)。

**The Survey and Mapping Office (SMO)** of the Lands Department is the official mapping agency of the Hong Kong Special Administrative Region. It produces a variety of maps for use in administration, planning development, education, leisure, etc. for the government, private sector as well as the general public. The map products are briefly described in this booklet with sample extracts. The sheet size is stated in millimetres below the graphic sample. Black and white versions of some colour series are also available for sale. The most up-to-date map product information and details of sales outlets can be accessed at URL: [www.landsd.gov.hk/mapping/en/pro&ser/index.htm](http://www.landsd.gov.hk/mapping/en/pro&ser/index.htm).

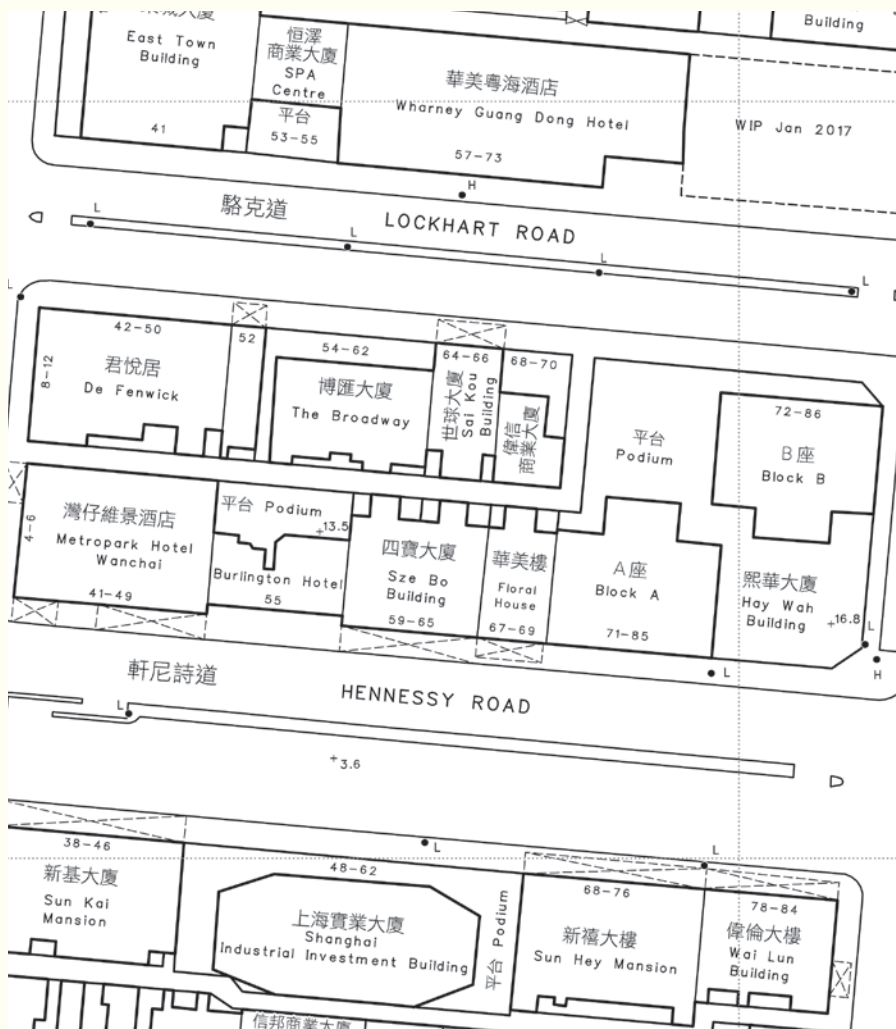
目 錄	CONTENTS	頁 Page
<b>地形圖</b>	<b>TOPOGRAPHIC MAPS</b>	
比例1:1 000 組別 HP1C	1:1 000 HP1C Series	1
比例1:5 000 組別 HP5C 及 HP5CL	1:5 000 HP5C and HP5CL Series	2
比例1:20 000 組別 HM20C	1:20 000 HM20C Series	3
比例1:50 000 組別 HM50CL 及 HM50CL/J	1:50 000 HM50CL and HM50CL/J Series	4
比例1:100 000 組別 HM100CL	1:100 000 HM100CL Series	5
比例1:200 000 組別 HM200CL	1:200 000 HM200CL Series	5
<b>街道/地方指南/照片集</b>	<b>STREET / PLACE GUIDES / PHOTO BOOK</b>	
比例1:10 000 組別 SM10C	1:10 000 SM10C Series	6
郊區地圖	Countryside Maps	7
香港街	Hong Kong Guide	8
飛越香港二十載	Flashbacks of Two Decades in Hong Kong	9
<b>特用地圖</b>	<b>SPECIAL MAPS</b>	
香港正射影像地圖	Hong Kong Orthophoto Maps	10
香港及珠江三角洲衛星影像地圖	Hong Kong & Pearl River Delta Satellite Image Maps	10
香港及廣東省衛星影像地圖	Hong Kong & Guangdong Province Satellite Image Map	11
泛珠三角衛星影像地圖	Pan-Pearl River Delta Satellite Image Map	11
專題地圖/飛行圖	Thematic Maps / Flying Charts	12
地質圖	Geological Maps	13
香港土地用途	Land Utilization in Hong Kong	14
香港景觀特色圖	Landscape Character Map of Hong Kong	14
地圖檔案	Map Archives	14
<b>航空照片</b>	<b>AERIAL PHOTOGRAPHS</b>	
航空照片	Aerial Photographs	15
<b>數碼地圖</b>	<b>DIGITAL MAPS</b>	
數碼地圖產品	Digital Map Products	16
三維空間數據	3D Spatial Data	17
數碼正射影像圖	Digital Orthophoto	18
公共資料	Public Sector Information	18
e香港街	e-HongKongGuide	19
<b>其他資訊</b>	<b>OTHER INFORMATION</b>	
其他地圖及刊物/版權	Other Map Products & Publications / Copyright	20
網上及海外訂購/地圖銷售處	Online & Overseas Order / Map Sales Outlets	21



## 比例 1 : 1 000 (組別 HP1C Series)

**HP1C** 是一套按測量資料繪製的基本地圖，比例為所有系列中的最大。全套共有 3 280 多張，覆蓋了整個香港，而地圖上的高度分別由高程點和 2 米高距的等高線顯示。由於圖上資料豐富及不斷更新，對規劃及地籍工作非常有用。

**HP1C Series** is the largest scale basic map surveyed and mapped to scale. It comprises more than 3 280 sheets covering the whole territory of Hong Kong. It contains a wealth of information with spot heights and contours at 2-metre intervals. Information on map are updated continuously. This map is very useful for planning and cadastral purposes.



圖幅尺寸 Sheet size : 750x850mm





## 比例 1 : 5 000 (組別 HP5C | HP5CL Series)

黑白版的 **HP5C** 及彩色版的 **HP5CL** 兩套地圖各有 169 張，是根據 1:1 000 比例的基本地圖編繪而成，並按航空攝影照片及實地測量資料不斷更新。地圖上有顯示 10 米高距的等高線，而 **HP5CL** 更運用分層設色來表示地形高度。此系列地圖深受歡迎，並得到建築界、工程界、規劃界及發展商廣泛使用。

**HP5C Series** is a black & white map and **HP5CL Series** is a colour map. Each series comprises 169 sheets which are compiled from 1:1 000 basic map series and updated continuously from aerial photographs and field survey information. Contours are shown at 10-metre intervals. For the **HP5CL Series**, layer tinting is applied to depict the relief. This general purpose map series is widely used by architects, engineers, planners, developers, etc.



圖幅尺寸 Sheet size : 750x850mm



## 比例 1 : 20 000 (組別 HM20C Series)

**HM20C** 是一套彩色地圖，共有 16 張，覆蓋了整個香港。圖幅一是標題及圖例，若與其餘的 15 張合併起來，便成了一張掛牆地圖，圖上顯示有高距為 20 米的等高線。學校多採用此套地圖作為地圖閱讀教材，而童軍及遠足人士就喜愛用它於遠足及野外定向活動。

**HM20C Series** is a colour map. It comprises 16 sheets covering the whole territory of Hong Kong. Sheet 1 is designed as a title sheet with legend for the wall map, which is joined together by 15 other sheets. Contours are shown at 20-metre intervals. This general purpose map is often used by schools for studying map reading. The Scouts and hikers also find it useful in hiking and orienteering activities.



圖幅尺寸 Sheet size : 685x980mm

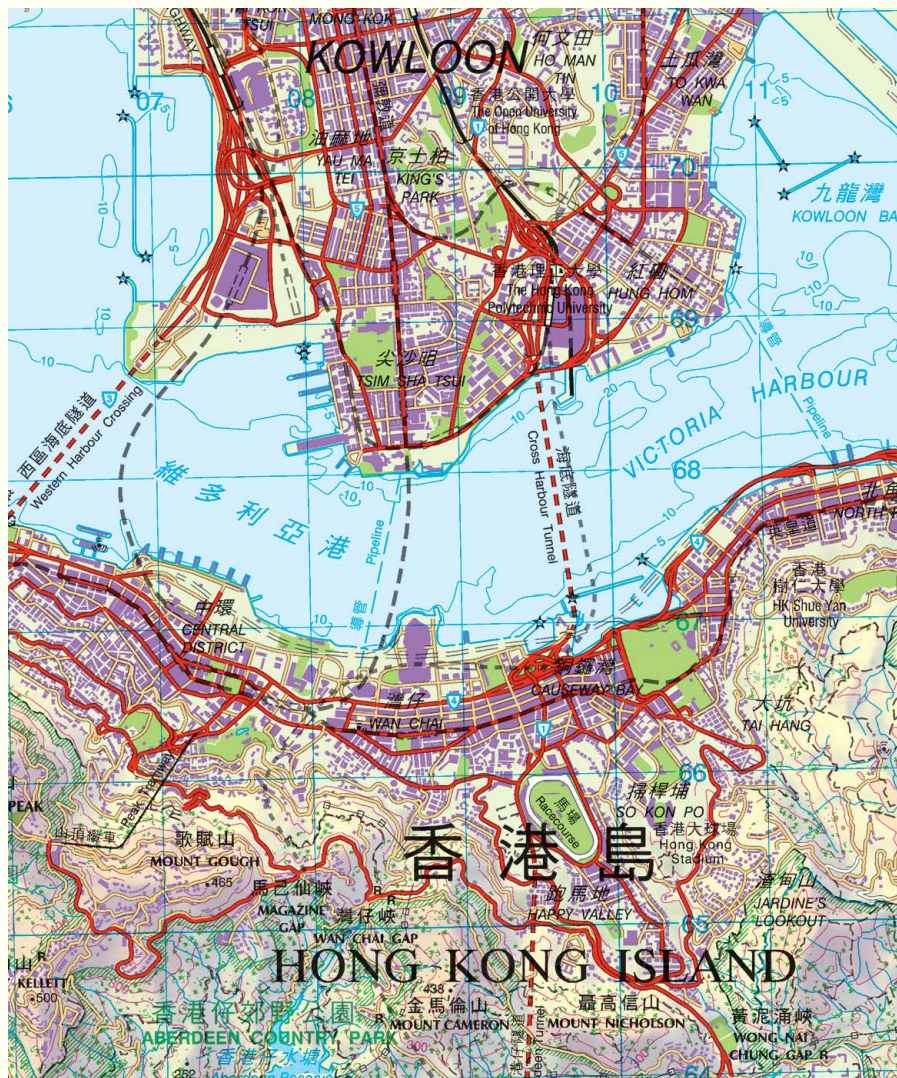




比例 1 : 50 000 (組別 HM50CL | HM50CL/J Series)

**HM50CL** 是一張以雙面印刷展示香港全境地貌的地圖。地圖以彩色印製，除繪有高距為 50 米的等高線外，亦使用暈渲法和分層設色來表示地形高度。**HM50CL/J** 是上述地圖的雙面合併版本。

**HM50CL Series** is printed on both sides to depict the whole territory of Hong Kong in one sheet. The map is in colour with hill-shading, layer-tinting and contours at 50-metre intervals. **HM50CL/J Series** is a full sheet version, joined by the two faces of HM50CL.



圖幅尺寸 Sheet size : 1010x690mm (HM50CL), 1010x1310mm (HM50CL/J)



## 比例 1 : 100 000 (組別 HM100CL Series)

**HM100CL** 描繪了香港的整體地形，是一張以彩色印製的地圖。地圖使用了暈渲法及分層設色來顯示地形高度，當中還有高距為 100 米的等高線和 50 米的輔助等高線。

**HM100CL Series** depicts the general view of Hong Kong. It is a single sheet colour map with hill-shading and layer-tinting. Contours are at 100-metre intervals with supplementary contours at 50 metres.



圖幅尺寸 Sheet size : 655x850mm

## 比例 1 : 200 000 (組別 HM200CL Series)

**HM200CL** 是一張概括展示香港地形的彩色地圖。地圖繪有相距為 100 米的等高線，並以暈渲法及分層設色來顯示地形高度。

**HM200CL Series** is a single sheet colour map that depicts a very generalized view of Hong Kong. Contours are at 100-metre intervals with hill-shading and layer-tinting.



圖幅尺寸 Sheet size : 327x425mm

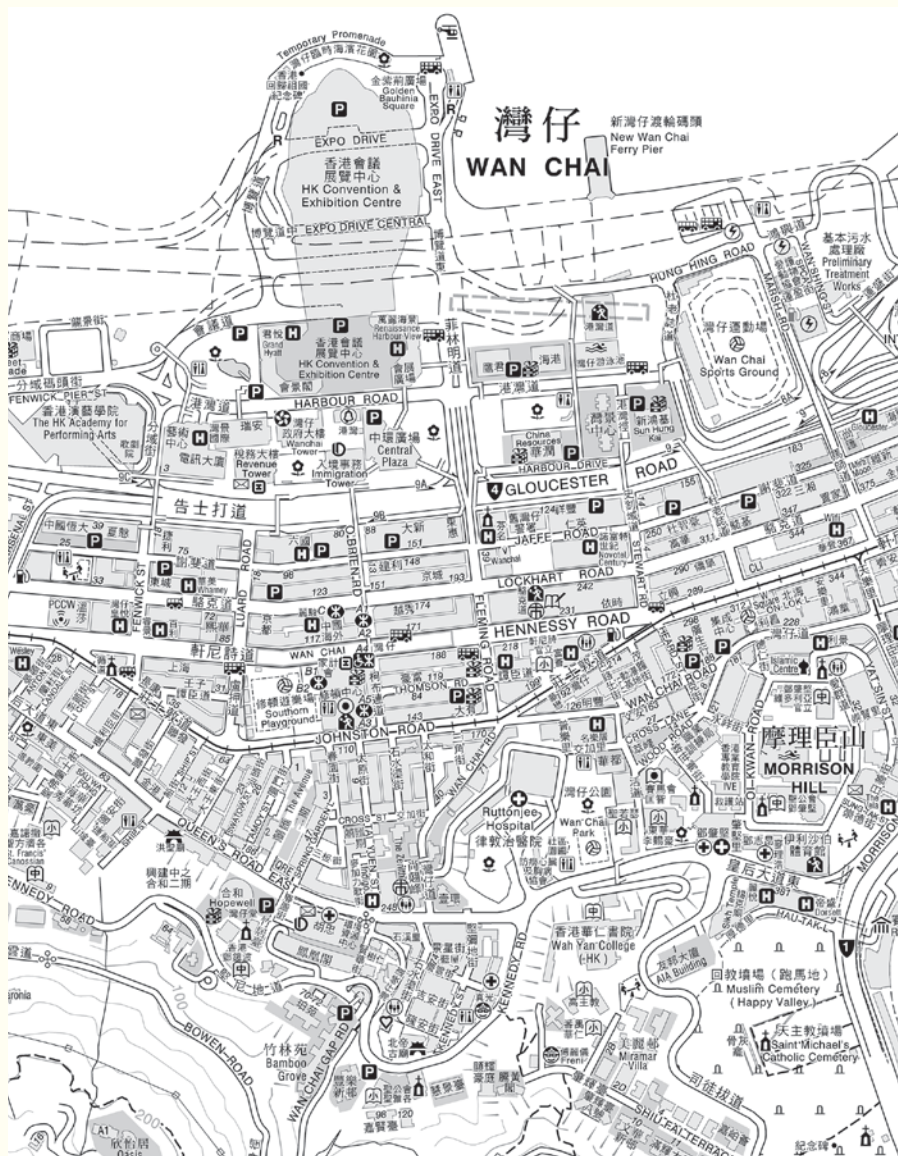




## 比例 1 : 10 000 (組別 SM10C Series)

全套 **SM10C** 共有 59 張，覆蓋整個香港特別行政區，並有 20 米高距的等高線來表示高度。

**SM10C Series** comprises 59 sheets covering the whole territory of the Hong Kong SAR with contours at 20-metre intervals.



圖幅尺寸 Sheet size : 685x980mm



## 郊區地圖 COUNTRYSIDE MAPS

郊區地圖共有5幅，分別為「香港島及鄰近島嶼」、「大嶼山及鄰近島嶼」、「新界西北部」、「新界東北及中部」和「西貢及清水灣」。每幅地圖都刊載了詳盡的郊遊和遠足資料，並附有展現沿途風光及郊遊地點的精美照片，協助遠足人士和大自然愛好者在郊區尋幽探勝。這套地圖以彩色雙面印製在防水環保合成紙上，並以摺本形式出售。

The Countryside Maps is in a set of five – “Hong Kong Island & Neighbouring Islands”, “Lantau Island & Neighbouring Islands”, “North-West New Territories”, “North-East & Central New Territories”, and “Sai Kung & Clear Water Bay”. Each map shows detailed information of leisure amenities and footpaths. Photographs on the map face show beautiful countryside scenery and picnic spots. This map series helps hikers and nature lovers to explore rural areas and country parks. It is printed on water-proof environmental friendly synthetic paper on both sides and folded.



圖幅尺寸 Sheet size : 880x610mm





## 香港街 HONG KONG GUIDE

香港街是一本資料詳盡的香港街道和地方指南。指南內的地圖覆蓋香港全境。大比例的地圖用於展示市區、新市鎮和其他已建設區，至於香港全境所用的地圖比例則較小。此外還包括街道、地方及鄉村、屋苑及大廈、學校、公共服務、文娛及康樂設施索引和公共交通資訊等豐富資料。至於街道、地方及鄉村索引，更可作為香港的地名錄，提供所有街道和地方於地圖上的中英文名稱。每年香港街均有一個主題介紹香港特色。

**Hong Kong Guide** is a comprehensive guide to streets and places of Hong Kong. It consists of maps covering the whole territory of Hong Kong. Maps of larger scale are used to depict urban areas, new towns and other built-up areas while maps of smaller scale are used for the whole territory. Besides, it contains valuable information including indexes of streets, places and villages, estates and buildings, schools, public services, leisure and cultural facilities as well as information on public transportation. The streets and places & villages indexes also serve as gazetteers for all Chinese and English street names and geographical place names adopted on maps of Hong Kong. A special theme about Hong Kong is included in each edition as well.



(經縮影 Reduced)

圖冊尺寸 Book size : 271x188x17mm





# 飛越香港二十載 — 香港航空照片集

## FLASHBACKS OF TWO DECADES IN HONG KONG - AERIAL PHOTO COLLECTION

為慶祝香港特別行政區成立二十周年，地政總署測繪處精心挑選歷年由地政總署拍攝的新舊航空照片，特別編製新版本的航空照片集《飛越香港二十載》，帶領讀者飛越香港二十載。

To celebrate the 20<sup>th</sup> anniversary of the establishment of the Hong Kong Special Administrative Region, the Survey and Mapping Office (SMO) of the Lands Department (LandsD) has published a new edition of aerial photo collection, **Flashbacks of Two Decades in Hong Kong**, to showcase major changes of the city over the last two decades through a display of the aerial photos taken by the LandsD at different times.



圖冊尺寸 Book size :  
267x315x19mm

★ ★  
20<sup>th</sup> 周年紀念  
★ ★  
ANNIVERSARY



1997



2016

汀九橋  
Ting Kau Bridge



1995



2016

中山紀念公園  
Sun Yat Sen Memorial Park



## 香港正射影像地圖

### HONG KONG ORTHOPHOTO MAPS (組別 OPM50 | OPM100 Series)

**OPM50**及**OPM100**是兩張同款但不同比例的正射影像地圖。兩張地圖均展現了香港全境，比例分別為1:50 000和1:100 000。地圖中使用的航空照片，其拍攝高度約2 400米，它們均採用了先進的數碼攝影測量技術來進行數據處理、正射糾正和鑲嵌這幾個製作程序。**OPM50**地圖上附印地名；而**OPM100**則是純影像地圖。

**OPM50 Series** and **OPM100 Series** are two identical orthophoto maps showing the whole territory of Hong Kong at the scale of 1:50 000 and 1:100 000. The aerial photographs are taken at the height of about 2 400 metres. Digital photogrammetric technology has been employed in data processing, ortho-rectification and mosaicking. The **OPM50** is an orthophoto map with addition of place names, while the **OPM100** is a plain version of orthophoto map.

(經縮影 Reduced)



圖幅尺寸 Sheet size :  
1080x1400mm (OPM50)  
600x770mm (OPM100)

## 香港及珠江三角洲衛星影像地圖

### HONG KONG AND PEARL RIVER DELTA SATELLITE IMAGE MAP

(組別 PRDM250S | PRDM500S Series)

**PRDM250S**及**PRDM500S**的比例分別為1:250 000及1:500 000，由六幅覆蓋珠江三角洲一帶的Landsat 8衛星影像拼製而成。地圖標示區內政區及居民地的名稱和位置。

**PRDM250S Series** is at 1:250 000 scale and **PRDM500S Series** is at 1:500 000 scale. Both series are Landsat 8 satellite image maps of the Pearl River Delta joined by 6 images. The map shows the name and location of administrative centres and settlements within the region.

(經縮影 Reduced)



圖幅尺寸 Sheet size :  
885x1140mm (PRDM250S)  
430x594mm (PRDM500S)



## 香港及廣東省衛星影像地圖 HONG KONG AND GUANGDONG PROVINCE SATELLITE IMAGE MAP

(組別 GDPM800S Series)

**GDPM800S** 是一張 1:800 000 比例的衛星影像地圖，由四十三幅分別於二零一五年一月至二零一七年二月拍攝的 Landsat 8 衛星影像鑲嵌而成。本地圖展示香港及廣東省區內省、市、山、島、海 / 灣、河 / 水庫及機場的名稱和位置。

**GDPM800S Series** is a satellite image map at 1:800 000 scale prepared by joining 43 Landsat 8 satellite images captured between January 2015 and February 2017. The map shows the name and location of provinces, prefectures, mountains, islands, sea / bays, rivers / reservoirs and airports within the region.

(經縮影 Reduced)



圖幅尺寸 Sheet size :  
1100x1250mm

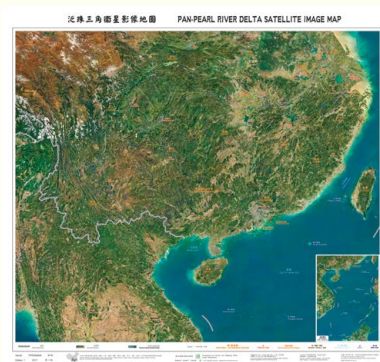
## 泛珠三角衛星影像地圖 PAN-PEARL RIVER DELTA SATELLITE IMAGE MAP

(組別 PPRDM2MS Series)

**PPRDM2MS** 是一張 1:2 000 000 比例的衛星影像地圖，由二零一三年九月至二零一六年二月期間拍攝的 Landsat 8 衛星影像鑲嵌而成。地圖覆蓋泛珠三角區域包括九省區(福建、江西、湖南、廣東、廣西、海南、四川、貴州、雲南)以及香港和澳門兩個特別行政區。衛星影像配以各省、市、特別行政區、山 / 高原 / 盆地、海 / 灣 / 海峽、島、河 / 湖的名字。

**PPRDM2MS Series** is a satellite image map at 1:2 000 000 scale using Landsat 8 satellite imagery captured between September 2013 and February 2016. The map shows the Pan-Pearl River Delta Region covering nine provinces / regions (Fujian, Jiangxi, Hunan, Guangdong, Guangxi, Hainan, Sichuan, Guizhou, Yunnan) and the Hong Kong and Macao SARs. Names of provinces, prefectures, SARs, mountains / plateaus / basins, seas / gulfs / straits, islands, rivers / lakes are placed on top of the satellite image.

(經縮影 Reduced)



圖幅尺寸 Sheet size :  
1350x1450mm



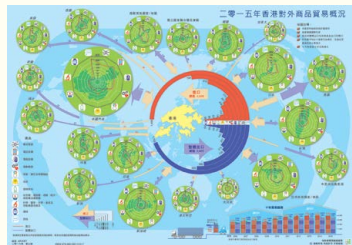


## 專題地圖 THEMATIC MAPS

這系列的地圖曾於歷年香港年報的封底內頁刊載。它們分別展示了氣候、地質、人口、填海與發展、通訊與貿易等專題資料，並備有中、英文版本。

Thematic Maps are end paper maps of past Hong Kong Annual Reports on various topics such as climate, geology, population, reclamation and development, communications and trade, etc. They are available in Chinese and English versions.

(經縮影 Reduced)



圖幅尺寸 Sheet size : 235x343mm

## 飛行圖 FLYING CHARTS

### 香港直升機飛行圖 Hong Kong Helicopter Flying Chart

(組別 HM50HFC Series)

### 香港本地飛行圖 Hong Kong Local Flying Chart

(組別 HM100LFC Series)

**HM50HFC** 及 **HM100LFC** 分別以 1:50 000 及 1:100 000 的比例繪製，前者共有兩張圖幅，後者只是單圖幅。這兩套飛行圖描繪了香港特別行政區內的飛行範圍。此外，地圖上也有以紅色和藍色印刷的英文航空資料，以及以英呎為單位的高度。

**HM50HFC Series** is at 1:50 000 scale and **HM100LFC Series** is at 1:100 000 scale. The former is in two sheets and the latter in one single sheet. They depict the airspace of the Hong Kong SAR. Aeronautical information, in English only, is overprinted in red and blue on the topographic base map. The overprint elevation is in feet.



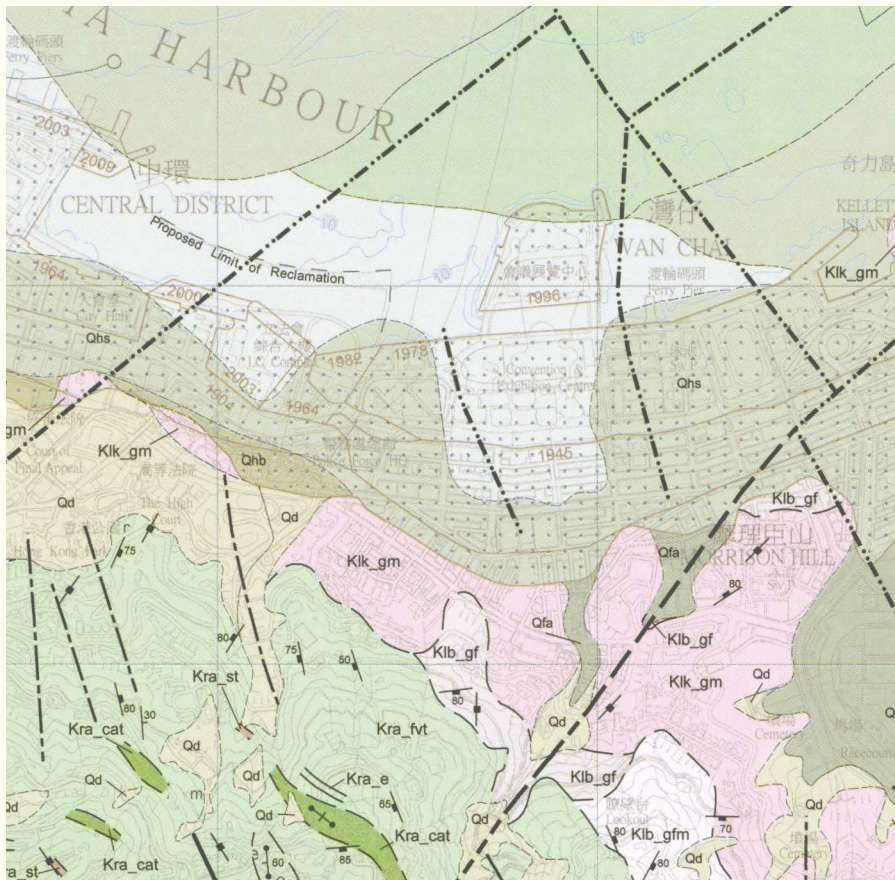
圖幅尺寸 Sheet size : 1080x1400mm (HM50HFC), 660x950mm (HM100LFC)

## 地質圖 GEOLOGICAL MAPS

(組別 HGM20, HGM20S, HGP5, HGP5A, HGP5B, HGM100 Series)

**HGM20** 地質圖一套共 15 張，比例為 1:20 000，解構整個香港的基岩和表土地質。另一套 **HGM20S** 以相同比例展示基岩的地質圖，只有一張覆蓋新田的圖幅。此外，土力工程處亦製作了地質圖 **HGM100** 及三套比例為 1:5 000 的地質調查圖 **HGP5**、**HGP5A** 及 **HGP5B**，它們分別描繪了元朗、新田和赤鱗角等地的基岩和表土地質。

**HGM20 Series** comprises 15 sheets at 1:20 000 scale. It depicts solid and superficial geology of the territory. Another 1:20 000 scale map on solid geology, **HGM20S Series**, covers only San Tin area in one sheet. The Geotechnical Engineering Office has also produced **HGM100 Series** and three sets of geological survey plans **HGP5**, **HGP5A** & **HGP5B Series** at scale 1:5 000 showing solid and superficial geology of Yuen Long, San Tin and Chek Lap Kok area.



圖幅尺寸 Sheet size: 770x1000mm (HGP5, HGP5A, HGP5B)  
775x1000mm (HGM20, HGM20S), 660x1000mm (HGM100)



## 香港土地用途 (組別 LUM/HK/75 Series)

## LAND UTILIZATION IN HONG KONG

## 香港景觀特色圖 (組別 LCM/HK/75 Series)

## LANDSCAPE CHARACTER MAP OF HONG KONG

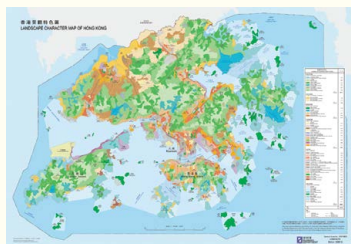
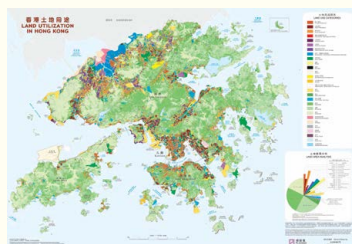
**LUM/HK/75** 及 **LCM/HK/75** 是由規劃署繪製的單張彩色地圖，兩者比例皆為 1:75 000。前者展示了香港土地用途的分佈及面積分析，而後者顯示了香港景觀特色的類型，各類型的描述均可在附加的《註釋》中找到。

**LUM/HK/75 Series** and **LCM/HK/75 Series** are single sheet colour maps at the scale of 1:75 000, produced by the Planning Department. The former shows the land use distribution of Hong Kong with land area analysis. The latter shows the landscape character type with description of each type in the attached explanatory notes.

(LUM/HK/75)

(經縮影 Reduced)

(LCM/HK/75)



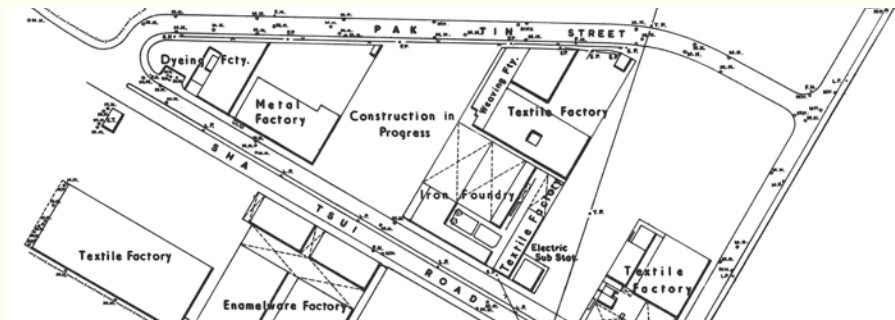
圖幅尺寸 Sheet size : 670x980mm

## 地圖檔案 MAP ARCHIVES

測繪處保存曾經出版的地形圖、街道圖及專題圖檔案。存檔地圖為研究香港發展提供寶貴的參考。

The Survey and Mapping Office keeps the archives of the published topographic maps, street maps and thematic maps. Archived maps provide valuable references for studying the development of Hong Kong.

(經縮影 Reduced)



圖幅尺寸 Sheet size: 750x1020mm

比例 1:1 200 地形圖 (1960) 1:1 200 Topographic Map (1960)





## 航空照片 AERIAL PHOTOGRAPHS

展現香港特別行政區實際景象的彩色航空照片會定期在不同的高度拍攝。此外，本處亦攝有黑白和紅外線照片，以及某些地區的傾斜航空照片。市民可依原大或把局部放大至8倍訂購。

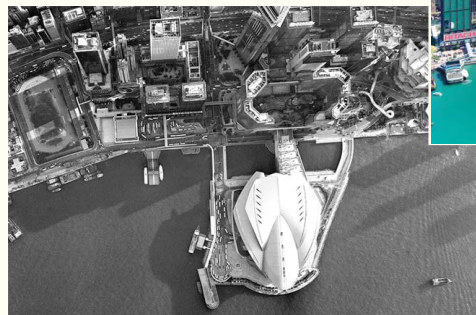
Colour aerial photographs of the Hong Kong SAR are taken periodically at high and low altitudes. There are also black & white and infra-red photographs as well as oblique aerial photographs of selected areas. Order for duplication of these aerial photographs at same scale or enlargement (up to 8 times) is available.

垂直航空照片(彩色)  
Vertical Aerial Photograph  
(Colour)



垂直航空照片(偽色紅外線)  
Vertical Aerial Photograph  
(False Colour Infrared)

垂直航空照片(黑白)  
Vertical Aerial Photograph  
(Black & White)



斜角航空照片(彩色)  
Oblique Aerial Photograph  
(Colour)

(經縮影 Reduced)



## 數碼地圖產品 DIGITAL MAP PRODUCTS

覆蓋全港的數碼地圖數據，內容不斷更新，地貌資料以點、線或方塊記錄顯示，並分別加上代碼，方便檢索。地理座標以香港 1980 方格網為參考。現可供訂購的數碼地圖產品有：

- (一) 1:1 000 數碼地形圖 (iB1000)
- (二) 1:5 000 數碼地形圖 (iB5000)
- (三) 1:10 000 數碼地形圖 (iB10000)
- (四) 1:20 000 數碼地形圖 (iB20000)
- (五) 1:1 000 數碼土地界線圖 (iC1000)
- (六) 建築物 (名稱和地址)、道路中線及場地地面地理參考數據庫 (iG1000)
- (七) 社區地理數據庫 (GeoCom) 只提供 EXCEL 及 ACCESS 格式
- (八) 數碼正射影像圖 (DOP1000-1963, DOP5000, DOPM50-L0)
- (九) 數碼航空照片 (DAP, DAP-UE, DAP-L0)
- (十) 三維空間數據 (3D-BIT00) 只提供 3D Max, 3ds 及 VRML 格式
- (十一) 數據字典

The digital map datasets covering the whole territory of Hong Kong are continuously updated. The map features depicted by point, line and polygon are separately coded to facilitate retrieval. The coordinates are in Hong Kong 1980 Grid. The following digital map products are available:

- (1) 1:1 000 Digital Topographic Map (iB1000)
- (2) 1:5 000 Digital Topographic Map (iB5000)
- (3) 1:10 000 Digital Topographic Map (iB10000)
- (4) 1:20 000 Digital Topographic Map (iB20000)
- (5) 1:1 000 Digital Land Boundary Map (iC1000)
- (6) Geo-reference Database of Building (Name & Address), Road Centre Lines, and Site Polygons (iG1000)
- (7) GeoCommunity Database (GeoCom) in EXCEL and ACCESS formats only
- (8) Digital Orthophoto (DOP1000-1963, DOP5000, DOPM50-L0)
- (9) Digital Aerial Photo (DAP, DAP-UE, DAP-L0)
- (10) 3D Spatial Data (3D-BIT00) in 3D Max, 3ds and VRML formats only
- (11) Data Dictionary

數碼地圖可提供下列檔案格式：

Digital maps are available in the following file formats:

**GIS**

(FGDB, GML)

**ASCII**

(Delimited Text)

**MicroStation**

(DGN)

**AutoCAD**

(DWG)

**GeoTIFF**

詳情請瀏覽網頁 [www.landsd.gov.hk/mapping/tc/digital\\_map/mapprod.htm](http://www.landsd.gov.hk/mapping/tc/digital_map/mapprod.htm)

Please visit [www.landsd.gov.hk/mapping/en/digital\\_map/mapprod.htm](http://www.landsd.gov.hk/mapping/en/digital_map/mapprod.htm) for more details.

### 數碼地圖產品查詢 ENQUIRY FOR DIGITAL MAP PRODUCT

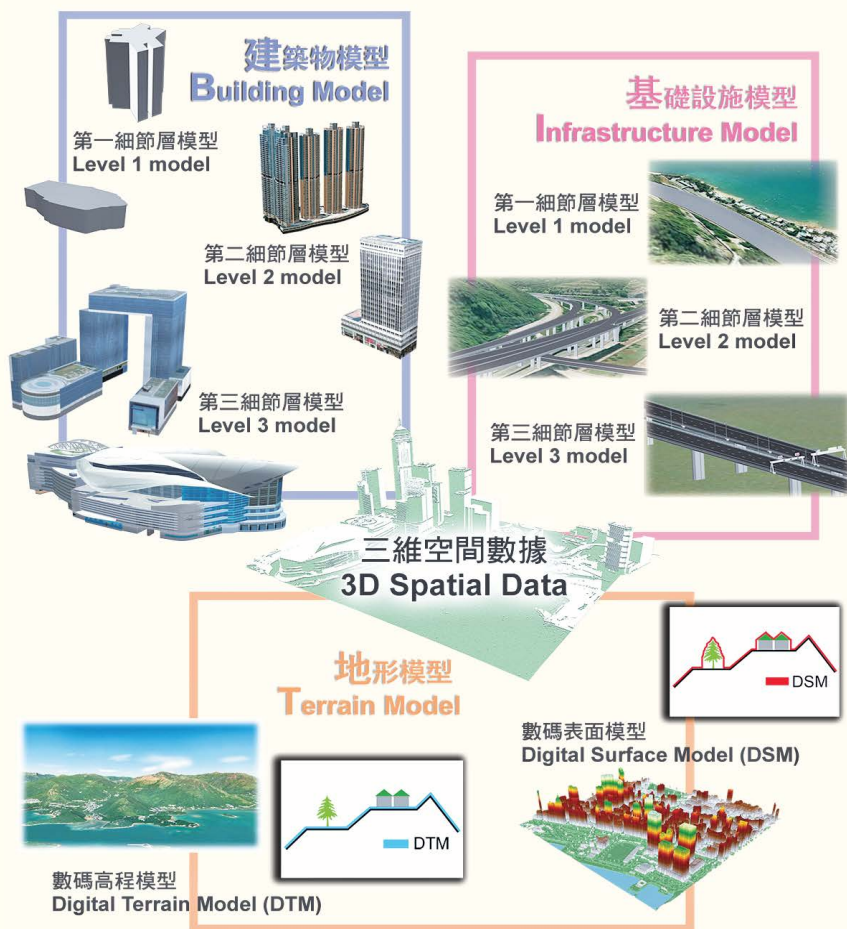
	電話 Tel.	傳真 Fax	電郵 Email
購買查詢 Sales Enquiries	2231 3187	2116 0774	smosale1@landsd.gov.hk
技術查詢 Technical Enquiries	2231 3454	2877 8520	lic_custsup@landsd.gov.hk

# 三維空間數據 3D SPATIAL DATA

(組別 3D-BIT00 Series)

**三維空間數據**是一套全港性數碼三維模型，用於標示各種主要地物包括建築物，基礎設施和地形的形狀、外觀和位置。在數據中，三維模型會先根據三種主要的地物分類，然後按其與實物的相似度再細分為八個副類目。三維空間數據能有效用於各種三維模型應用，例如根據景觀評估土地價值、以三維動畫演示工程方案、和分析空氣流通等等。

**3D Spatial Data** is a set of territory-wide digital 3D model data created to represent the shape, appearance and position of various types of ground features including building, infrastructure and terrain. In this dataset, the 3D models are categorized into eight secondary classes under three primary classes according to their types and level of details. The 3D Spatial Data is very useful for many 3D modeling applications such as view analysis for land assessment, 3D animation for presentation of engineering proposals, air ventilation analysis, etc.







## 數碼正射影像圖 DIGITAL ORTHOPHOTO

**數碼正射影像圖**是具有正確比例及位置資料的地貌數碼影像圖。它是利用地貌模型及相關的攝影數據，將航空照片因地形及攝影角度而產生的變形影像加以矯正。目前，數碼正射影像圖產品按其影像解析度及原有航空照片的種類分為三個系列，即**DOP5000**、**DOP1000-1963**及**DOPM50-L0**。

**Digital Orthophoto** is derived from aerial photographs in which image displacement caused by relief and camera tilts has been rectified. Orthophoto maintains the pictorial information of the original aerial photographs and has uniform scale. Currently, the Digital Orthophoto has three series of products, namely **DOP5000**, **DOP1000-1963** and **DOPM50-L0**, which are classified based on the sizes of image resolution and the types of source photographs used.



DOP1000-1963  
1963 年的大澳 Tai O in 1963  
(經縮影 Reduced)



DOP5000  
2013 年的大澳 Tai O in 2013  
(經縮影 Reduced)

## 公共資料 PUBLIC SECTOR INFORMATION

測繪處提供多種**公共資料**，供市民免費使用，以作非商業和商業用途。現時，公用數據包括公共設施地理參考數據、大地測量數據、數碼地形模型、航空照片飛行索引及街道名稱。公用地圖則包括地形圖(**B100k-OM**及**B200k-OM**)及正射影像地圖(**DOPM100-L0-OM**)。地形圖展示主要地貌資料，適合用作比例為1:100 000及1:200 000的各種地圖應用。正射影像地圖由幾何糾正的航空照片鑲嵌而成，比例是1:100 000。

The Survey and Mapping Office provides various types of **Public Sector Information** free to the general public for non-commercial and commercial use. At present, open data include geo-referenced public facility data, geodetic survey data, aerial photo flight index, digital terrain model and street name. Open maps include topographic maps (**B100k-OM** and **B200k-OM**) and orthophoto map (**DOPM100-L0-OM**). The topographic maps show key geographical features and are suitable for map applications in 1:100 000 and 1:200 000 scales. The orthophoto map is mosaicked from geometrically rectified aerial photographs and constructed at the scale of 1:100 000.



免費作非商業和商業用途

Free for Non-Commercial and Commercial Use

[www.landso.gov.hk/mapping/tc/download/psi/index.htm](http://www.landso.gov.hk/mapping/tc/download/psi/index.htm)



## e 香港街 e-HONGKONG GUIDE

《e 香港街》是一本以《香港街》為藍本來設計的電子地圖書，是一系列以 GeoPDF® 為檔案格式的電子地圖，方便地圖用戶透過桌上電腦及流動裝置，查閱各類地理及相關社區設施資訊。GeoPDF® 檔案是具有地理空間延伸特點的 PDF 檔案，可於桌上及流動裝置應用程式上使用，用戶可使用免費工具檢視坐標、於全球定位系統裝置追蹤位置、查閱坐標等。

"e-HongKongGuide" is an electronic map book based on "Hong Kong Guide", as a collection of maps in the format of GeoPDF®. It provides map users a convenient means of accessing geographic and community facilities information via various computer and mobile devices. GeoPDF® are PDF files with geospatial extensions. It can be read by different applications on desktop and mobile device. Free tools allow users to read coordinates, track positions using a GPS device, display coordinates in various map projections, etc.

The graphic features a stylized Hong Kong skyline in the background. In the foreground, three map covers are displayed: '地圖索引 MAP INDEX' (a satellite map), '鐵路網絡及主要幹線圖 MTR & STRATEGIC ROUTES MAP' (a map of the MTR and major roads), and '圖幅頁面 MAP PAGES' (a detailed street map). Above the maps is the title 'e 香港街 e-HongKongGuide' with a red square logo containing the characters 'e 香港街'. At the bottom, there is a '免費 FREE' (Free) label with a download icon, a QR code with 'SCAN IT' text, a 'GeoPDF®' logo, and a '離線 OFFLINE' (Offline) label with a map icon. The website address [www.landsd.gov.hk/mapping/tc/download/ehkg.htm](http://www.landsd.gov.hk/mapping/tc/download/ehkg.htm) is printed at the bottom.



## 其他地圖及刊物

## OTHER MAP PRODUCTS AND PUBLICATIONS

測繪處亦出售下列由其他機構製作的地圖及刊物：

- (一) 規劃署製作的城市規劃分區計劃大綱圖、發展大綱圖及發展藍圖  
(查詢電話：2231 5000)；
- (二) 民航處的管制障礙物地圖；
- (三) 漁農自然護理署製作的長途遠足徑地圖  
(查詢電話：2708 8885)；及
- (四) 政府新聞處出版諸如香港年報及香港潮汐表等刊物  
(查詢電話：2537 1910)。

以上第(四)項內若干項目只於香港及九龍地圖銷售處出售。

The following maps and publications produced by other agencies are also available :

- (1) Town Planning Outline Zoning Plans, Outline Development Plans and Layout Plans by the Planning Department (Enquiries : 2231 5000);
- (2) Control of Obstructions Plans by the Civil Aviation Department;
- (3) Hiking Trail Plans by the Agriculture, Fisheries and Conservation Department (Enquiries : 2708 8885); and
- (4) Publications of the Information Services Department such as Hong Kong Year Book, Tide Tables for Hong Kong, etc. (Enquiries : 2537 1910).

Selective publications of Item (4) are available at the Hong Kong and Kowloon Map Publications Centres only.

## 版權 COPYRIGHT

測繪處出品的所有數碼地圖、紙品地圖、圖則、照片以及有關刊物均受版權法保護。若擬刊載上述地圖及刊物，須以書面向本處申請，並必須繳付所指定的版權費，以及在有關刊物內註明原圖出處。如刊物售賣的時間有限，或只在電視播放，則可獲減收版權費。查詢請與地圖資訊組聯絡，電話 (852) 2231 3187、傳真 (852) 2116 0774 或電郵至 [copyright\\_smo@landsd.gov.hk](mailto:copyright_smo@landsd.gov.hk)。

All digital maps, paper maps, plans, photographs and related publications produced by the Survey and Mapping Office are subject to copyright protection. Reproduction in whole or in part is normally permitted on payment of royalty. An acknowledgment of map source is required in the publication. Copyright for publications with limited "shelf life" or in TV presentation is charged at a reduced rate. Enquiries should be directed to the Map Information Section at telephone (852) 2231 3187, fax (852) 2116 0774 or by email to [copyright\\_smo@landsd.gov.hk](mailto:copyright_smo@landsd.gov.hk).





## 網上訂購 ONLINE ORDER

「[香港地圖服務](#)」是一個24小時運作的網站，提供網上查詢、購買和下載地政總署的空間數據和地圖產品服務。顧客可隨時隨地以手機或電腦從網站搜尋地段及位置資料，得到所需要的數碼地圖、紙品地圖、航空照片，及測量數據。配合派遞服務應用程式界面(API)，各種紙品地圖也可以快捷地派遞到客戶手上。

[Hong Kong Map Service \(HKMS\)](#) is a website providing round-the-clock online services for customers to access, purchase and download Lands Department's spatial data and map products. Customers can easily search lot and location information anytime, anywhere and obtain all kinds of digital maps, paper maps, aerial photographs and land surveying data at their fingertips with mobile phones or computers via the website. In connection with the delivery service Application Programming Interface (API), paper map products can also be delivered swiftly and directly to customers.

## 海外訂購 OVERSEAS ORDER

本地及海外顧客除可以在「香港地圖服務」網站訂購地圖產品外，亦可以聯絡本處，本處在收到訂購確認後，便會發出報價單。顧客需以港元為貨幣，並必須可經香港開業銀行兌現的劃線支票或匯票，支付在報價單上列明的購買地圖款項及相關郵費，而收款人一欄需填上「香港特別行政區政府」。如有查詢，請電郵至 [smosale1@landsd.gov.hk](mailto:smosale1@landsd.gov.hk)，亦可傳真到 (852) 2116 0774 或致電 (852) 2231 3187。

Local and overseas customers can order map products from the Hong Kong Map Service (HKMS) website. SMO will also provide quotations on maps and postage charges upon request. Payment should be made in Hong Kong currency by crossed cheque or bank draft payable to "The Government of the Hong Kong Special Administrative Region" drawn at any bank situated in Hong Kong. For enquiries, please contact us by email: [smosale1@landsd.gov.hk](mailto:smosale1@landsd.gov.hk), fax: (852) 2116 0774 or tel: (852) 2231 3187.



## 地圖銷售處 MAP SALES OUTLETS

地圖目錄內展示的所有紙品地圖種類，均可在附有(\*)號的主要[銷售處](#)查閱及購買。較普及的地圖種類，在各區測量處，以及部份書局亦有出售。

Paper maps shown in this catalogue can be viewed and purchased at the main centres indicated with (\*) in the list of [Sales Centres](#). Popular items are also available at the District Survey Offices and some bookshops.