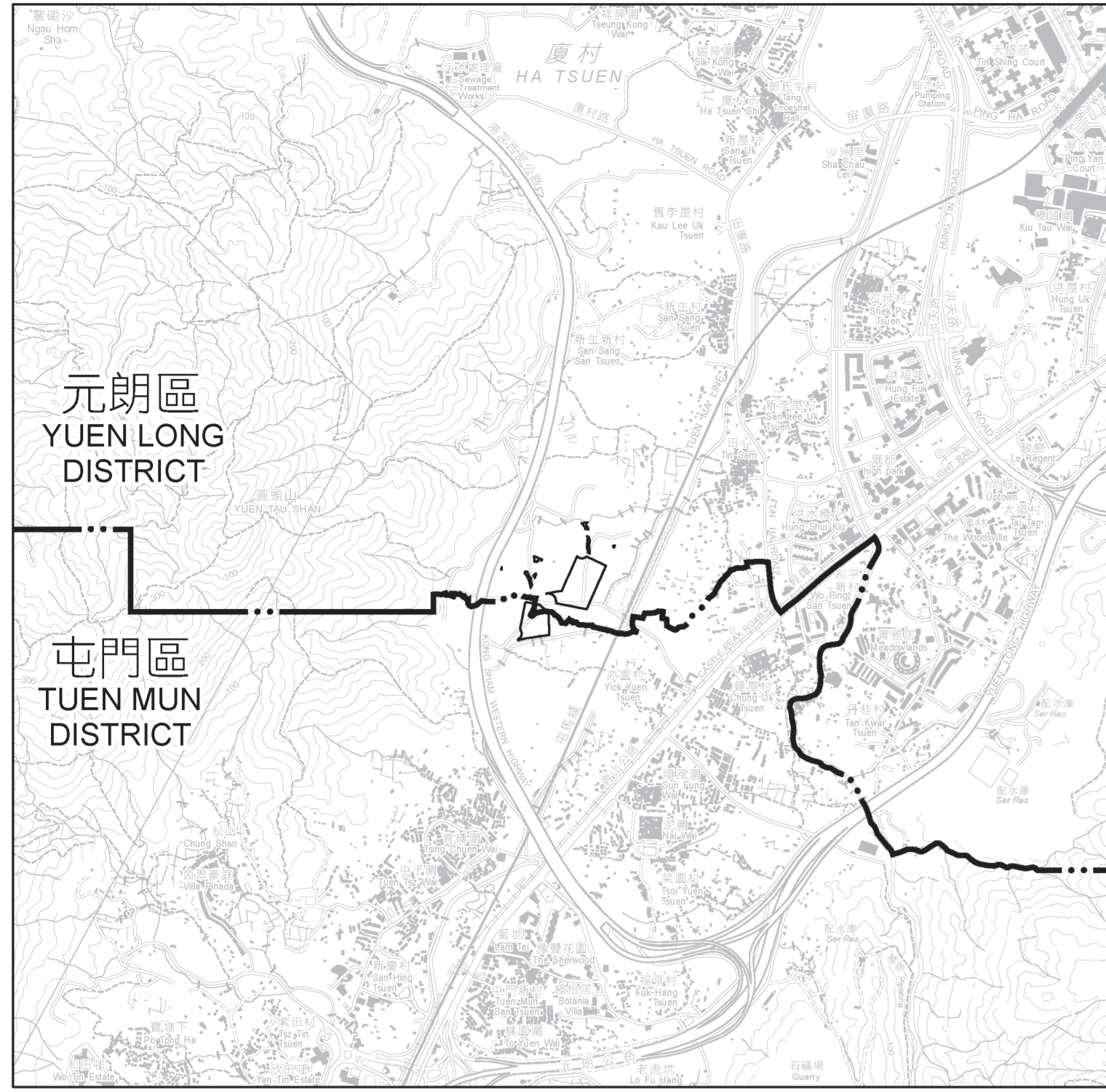




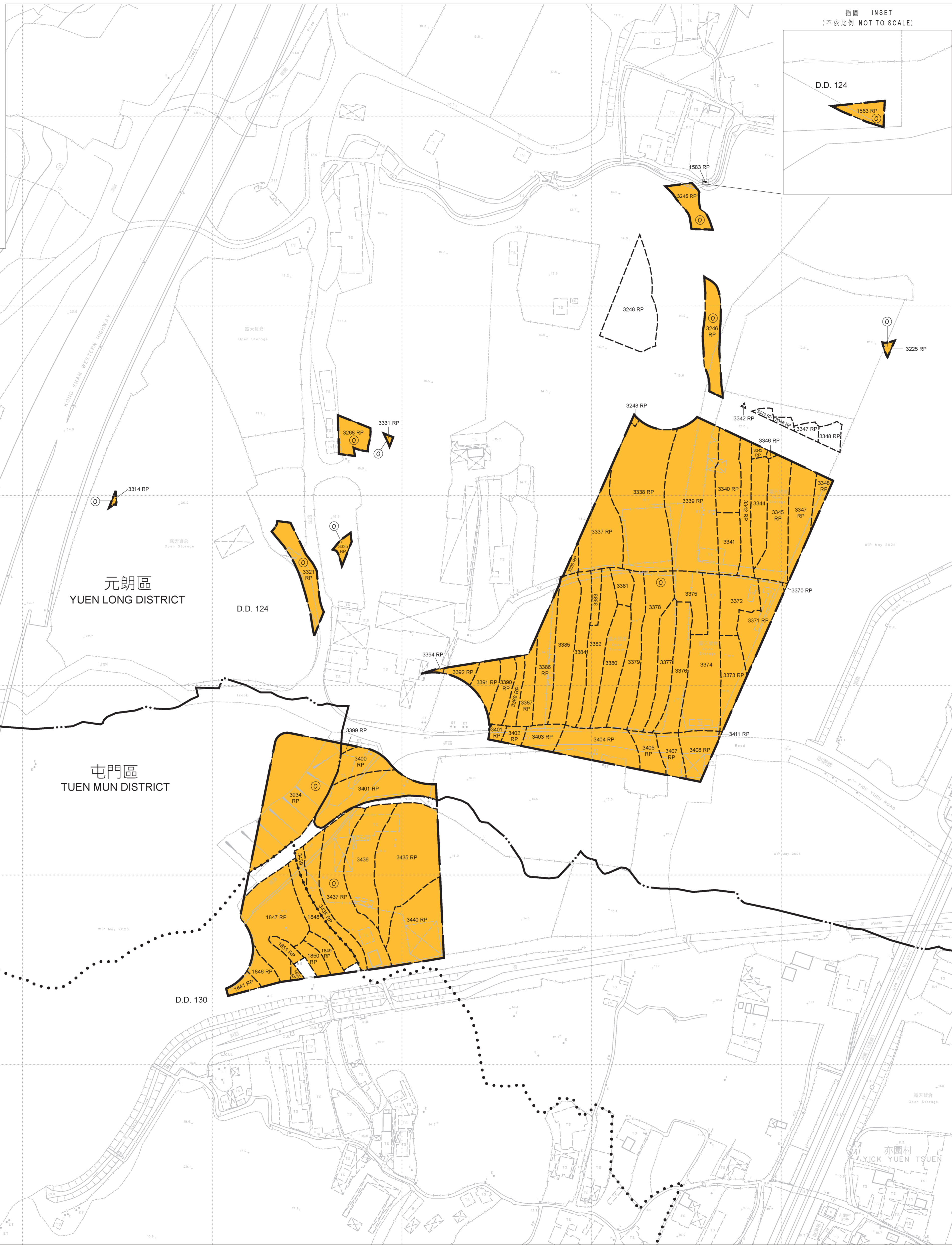
位置 LOCATION



比例 SCALE 1:20 000

圖例 LEGEND

- 收地/清拆界限  
RESUMPTION / CLEARANCE LIMIT
- 將予收回的土地  
LAND TO BE RESUMED
- 地段界線  
LOT BOUNDARY
- D.D. 丈量部份  
DEMARCATION DISTRICT
- RP 餘段  
REMAINING PORTION
- 丈量部份界線  
DEMARCATION DISTRICT BOUNDARY
- 分區界線  
DISTRICT BOUNDARY
- 褐色  
COLOURED ORANGE



比例尺 SCALE 1:1 000  
metres 0 20 40 60 80 100 metres

| 將予收回土地的面積<br>Area of Land to be Resumed |                 |   |                         |        |
|---|-----------------|---|-------------------------|--------|
| 丈量部份編號<br>D.D. No.                      | 地段編號<br>Lot No. | 平方呎(約數)<br>sq ft (about)                                | 平方米(約數)<br>sq m (about) |        |
| 124                                     | 1583 RP         | [舊稱 1583 (部分)]<br>[formerly known as 1583 (Portion)]    | 0.3                     | 3      |
| 124                                     | 3225 RP         | [舊稱 3225 (部分)]<br>[formerly known as 3225 RP (Portion)] | 26.6                    | 266    |
| 124                                     | 3245 RP         | [舊稱 3245 (部分)]<br>[formerly known as 3245 (Portion)]    | 187.3                   | 2016   |
| 124                                     | 3246 RP         | [舊稱 3246 (部分)]<br>[formerly known as 3246 (Portion)]    | 381.2                   | 4103   |
| 124                                     | 3248 RP         | [舊稱 3248 (部分)]<br>[formerly known as 3248 (Portion)]    | 14.4                    | 155    |
| 124                                     | 3268 RP         | [舊稱 3268 (部分)]<br>[formerly known as 3268 (Portion)]    | 216.6                   | 2331   |
| 124                                     | 3314 RP         | [舊稱 3314 (部分)]<br>[formerly known as 3314 RP (Portion)] | 236.2                   | 2542   |
| 124                                     | 3321 RP         | [舊稱 3321 (部分)]<br>[formerly known as 3321 (Portion)]    | 490.8                   | 5283   |
| 124                                     | 3325 RP         | [舊稱 3325 (部分)]<br>[formerly known as 3325 (Portion)]    | 75.5                    | 813    |
| 124                                     | 3331 RP         | [舊稱 3331 (部分)]<br>[formerly known as 3331 (Portion)]    | 190.3                   | 2049   |
| 124                                     | 3336 RP         | [舊稱 3336 (部分)]<br>[formerly known as 3336 (Portion)]    | 11.0                    | 116    |
| 124                                     | 3337 RP         | [舊稱 3337 (部分)]<br>[formerly known as 3337 (Portion)]    | 778.2                   | 8355   |
| 124                                     | 3338 RP         | [舊稱 3338 (部分)]<br>[formerly known as 3338 (Portion)]    | 2017.6                  | 21717  |
| 124                                     | 3339 RP         | [舊稱 3339 (部分)]<br>[formerly known as 3339 (Portion)]    | 1812.8                  | 19513  |
| 124                                     | 3340 RP         | [舊稱 3340 (部分)]<br>[formerly known as 3340 (Portion)]    | 551.1                   | 5932   |
| 124                                     | 3341            | [舊稱 3341 (部分)]<br>[formerly known as 3341 (Portion)]    | 445.2                   | 4792   |
| 124                                     | 3342 RP         | [舊稱 3342 (部分)]<br>[formerly known as 3342 (Portion)]    | 434.8                   | 4680   |
| 124                                     | 3343 RP         | [舊稱 3343 (部分)]<br>[formerly known as 3343 (Portion)]    | 49.3                    | 531    |
| 124                                     | 3344            | [舊稱 3344 (部分)]<br>[formerly known as 3344 (Portion)]    | 485.6                   | 5227   |
| 124                                     | 3345 RP         | [舊稱 3345 (部分)]<br>[formerly known as 3345 (Portion)]    | 743.1                   | 7996   |
| 124                                     | 3346 RP         | [舊稱 3346 (部分)]<br>[formerly known as 3346 (Portion)]    | 14.9                    | 160    |
| 124                                     | 3347 RP         | [舊稱 3347 (部分)]<br>[formerly known as 3347 (Portion)]    | 604.6                   | 6506   |
| 124                                     | 3348 RP         | [舊稱 3348 (部分)]<br>[formerly known as 3348 (Portion)]    | 144.0                   | 1550   |
| 124                                     | 3370 RP         | [舊稱 3370 (部分)]<br>[formerly known as 3370 (Portion)]    | 95.8                    | 1031   |
| 124                                     | 3371 RP         | [舊稱 3371 (部分)]<br>[formerly known as 3371 (Portion)]    | 470.4                   | 5053   |
| 124                                     | 3372            | [舊稱 3372 (部分)]<br>[formerly known as 3372 (Portion)]    | 445.2                   | 4792   |
| 124                                     | 3373 RP         | [舊稱 3373 (部分)]<br>[formerly known as 3373 (Portion)]    | 560.4                   | 6032   |
| 124                                     | 3374            | [舊稱 3374 (部分)]<br>[formerly known as 3374 (Portion)]    | 1416.4                  | 15246  |
| 124                                     | 3375            | [舊稱 3375 (部分)]<br>[formerly known as 3375 (Portion)]    | 364.2                   | 3920   |
| 124                                     | 3376            | [舊稱 3376 (部分)]<br>[formerly known as 3376 (Portion)]    | 566.5                   | 6066   |
| 124                                     | 3377            | [舊稱 3377 (部分)]<br>[formerly known as 3377 (Portion)]    | 566.5                   | 6066   |
| 124                                     | 3378            | [舊稱 3378 (部分)]<br>[formerly known as 3378 (Portion)]    | 768.9                   | 8276   |
| 124                                     | 3379            | [舊稱 3379 (部分)]<br>[formerly known as 3379 (Portion)]    | 809.4                   | 8712   |
| 124                                     | 3380            | [舊稱 3380 (部分)]<br>[formerly known as 3380 (Portion)]    | 809.4                   | 8712   |
| 124                                     | 3381            | [舊稱 3381 (部分)]<br>[formerly known as 3381 (Portion)]    | 202.3                   | 2178   |
| 124                                     | 3382            | [舊稱 3382 (部分)]<br>[formerly known as 3382 (Portion)]    | 566.5                   | 6066   |
| 124                                     | 3383            | [舊稱 3383 (部分)]<br>[formerly known as 3383 (Portion)]    | 121.4                   | 1307   |
| 124                                     | 3384            | [舊稱 3384 (部分)]<br>[formerly known as 3384 (Portion)]    | 485.6                   | 5227   |
| 124                                     | 3385            | [舊稱 3385 (部分)]<br>[formerly known as 3385 (Portion)]    | 728.5                   | 7841   |
| 124                                     | 3386 RP         | [舊稱 3386 (部分)]<br>[formerly known as 3386 (Portion)]    | 672.5                   | 7238   |
| 124                                     | 3387 RP         | [舊稱 3387 (部分)]<br>[formerly known as 3387 (Portion)]    | 340.9                   | 3670   |
| 124                                     | 3388 RP         | [舊稱 3388 (部分)]<br>[formerly known as 3388 (Portion)]    | 272.9                   | 2939   |
| 124                                     | 3390 RP         | [舊稱 3390 (部分)]<br>[formerly known as 3390 (Portion)]    | 267.1                   | 2875   |
| 124                                     | 3391 RP         | [舊稱 3391 (部分)]<br>[formerly known as 3391 (Portion)]    | 378.7                   | 4076   |
| 124                                     | 3392 RP         | [舊稱 3392 (部分)]<br>[formerly known as 3392 (Portion)]    | 163.8                   | 1754   |
| 124                                     | 3394 RP         | [舊稱 3394 (部分)]<br>[formerly known as 3394 (Portion)]    | 88.8                    | 967    |
| 124                                     | 3399 RP         | [舊稱 3399 (部分)]<br>[formerly known as 3399 (Portion)]    | 23.6                    | 254    |
| 124                                     | 3400 RP         | [舊稱 3400 (部分)]<br>[formerly known as 3400 (Portion)]    | 428.3                   | 4610   |
| 124                                     | 3401 RP         | [舊稱 3401 (部分)]<br>[formerly known as 3401 (Portion)]    | 784.6                   | 8230   |
| 124                                     | 3402 RP         | [舊稱 3402 (部分)]<br>[formerly known as 3402 (Portion)]    | 162.3                   | 1747   |
| 124                                     | 3403 RP         | [舊稱 3403 (部分)]<br>[formerly known as 3403 (Portion)]    | 162.0                   | 1743   |
| 124                                     | 3404 RP         | [舊稱 3404 (部分)]<br>[formerly known as 3404 (Portion)]    | 622.3                   | 6681   |
| 124                                     | 3405 RP         | [舊稱 3405 (部分)]<br>[formerly known as 3405 (Portion)]    | 352.0                   | 3788   |
| 124                                     | 3407 RP         | [舊稱 3407 (部分)]<br>[formerly known as 3407 (Portion)]    | 151.0                   | 1625   |
| 124                                     | 3408 RP         | [舊稱 3408 (部分)]<br>[formerly known as 3408 (Portion)]    | 388.2                   | 4178   |
| 124                                     | 3411 RP         | [舊稱 3411 (部分)]<br>[formerly known as 3411 (Portion)]    | 3.9                     | 41     |
| 124                                     | 3435 RP         | [舊稱 3435 (部分)]<br>[formerly known as 3435 (Portion)]    | 1320.8                  | 14217  |
| 124                                     | 3436            | [舊稱 3436 (部分)]<br>[formerly known as 3436 (Portion)]    | 890.3                   | 9583   |
| 124                                     | 3437 RP         | [舊稱 3437 (部分)]<br>[formerly known as 3437 (Portion)]    | 1326.9                  | 14290  |
| 124                                     | 3438 RP         | [舊稱 3438 (部分)]<br>[formerly known as 3438 (Portion)]    | 518.0                   | 5576   |
| 124                                     | 3439            | [舊稱 3439 (部分)]<br>[formerly known as 3439 (Portion)]    | 80.9                    | 871    |
| 124                                     | 3440 RP         | [舊稱 3440 (部分)]<br>[formerly known as 3440 (Portion)]    | 604.5                   | 6460   |
| 124                                     | 3434 RP         | [舊稱 3434 (部分)]<br>[formerly known as 3434 (Portion)]    | 1923.3                  | 20702  |
| 130                                     | 1841 RP         | [舊稱 1841 (部分)]<br>[formerly known as 1841 RP (Portion)] | 291.8                   | 3141   |
| 130                                     | 1846 RP         | [舊稱 1846 (部分)]<br>[formerly known as 1846 (Portion)]    | 47.8                    | 515    |
| 130                                     | 1847 RP         | [舊稱 1847 (部分)]<br>[formerly known as 1847 (Portion)]    | 1148.4                  | 12372  |
| 130                                     | 1848            | [舊稱 1848 (部分)]<br>[formerly known as 1848 (Portion)]    | 404.7                   | 4356   |
| 130                                     | 1849 RP         | [舊稱 1849 (部分)]<br>[formerly known as 1849 (Portion)]    | 406.6                   | 4377   |
| 130                                     | 1850 RP         | [舊稱 1850 (部分)]<br>[formerly known as 1850 RP (Portion)] | 186.0                   | 2002   |
| 130                                     | 1851 RP         | [舊稱 1851 (部分)]<br>[formerly known as 1851 (Portion)]    | 97.5                    | 1049   |
| 130                                     | 1852 RP         | [舊稱 1852 (部分)]<br>[formerly known as 1852 (Portion)]    | 130.4                   | 1404   |
| 總面積 Total Area                          |                 |   | 33918.6                 | 365103 |

只作識別用 FOR IDENTIFICATION PURPOSES ONLY

已簽署 Signed  
(劉志堅 Jacky LAU)  
署理地產測量師/新發展區 Chief Estate Surveyor / New Development Area (Acting)  
日期 Date 16/06/2026

地政總署新發展區組  
New Development Area Section, Lands Department  
專員由元朗區地政辦事處  
Plan Prepared by District Survey Office, Yuen Long

收地圖則  
收回土地條例(第124章)  
收回土地以便進行洪水橋/厦村新發展區第二期發展計劃(第五批)  
RESUMPTION PLAN  
LANDS RESUMPTION ORDINANCE (CHAPTER 124)  
RESUMPTION OF LAND FOR THE SECOND PHASE DEVELOPMENT OF HUNG SHUI KIU / HA TSUEN NEW DEVELOPMENT AREA (FIFTH BATCH)

檔案編號  
File No. LD NDA/HSK/PLAN/6, LD DSO/YL/13/169

測量圖編號  
Survey Sheet No. 6-NW-11D, 12C, 16B & 17A

參考圖編號  
Reference Plan No. 278463/LR/1100 to 1128 (土木工程拓展署 CEDD)  
YLM11236 (地政總署 LANDSD)

圖則編號  
PLAN No. YLM11794