

	取回/清拆界限 RESUMPTION / CLEARANCE LIMIT	D.D.	文區界線 DEMARCATON DISTRICT		文區劃分界線 DEMARCATON DISTRICT BOUNDARY
	待予取回的土庫 LAND TO BE RESUMED	RP	餘地 REMAINING PORTION		橙色 COLOURED ORANGE
	地庫界線 LOT BOUNDARY	S	分區 SECTION		

圖 C MAP C

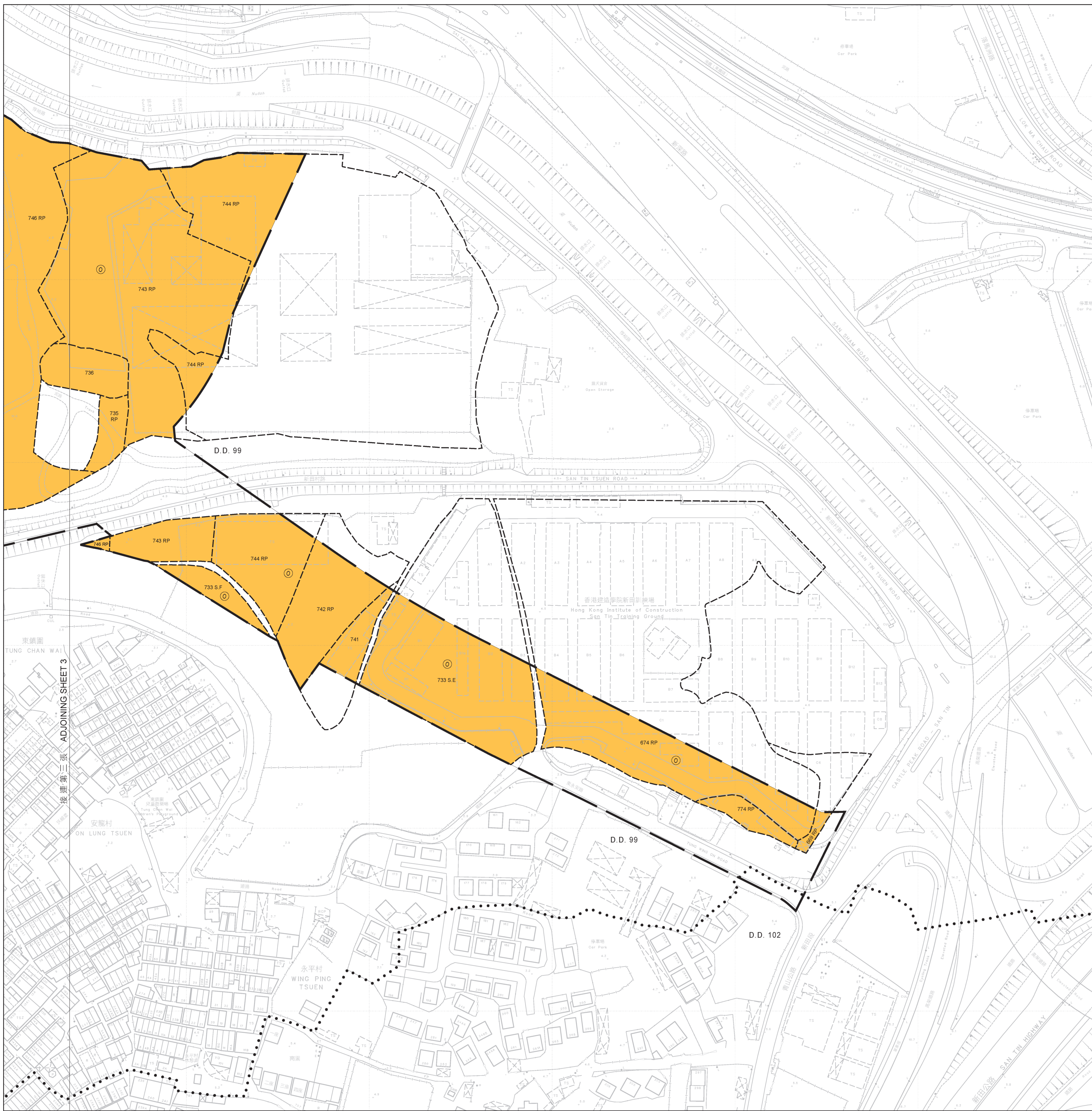
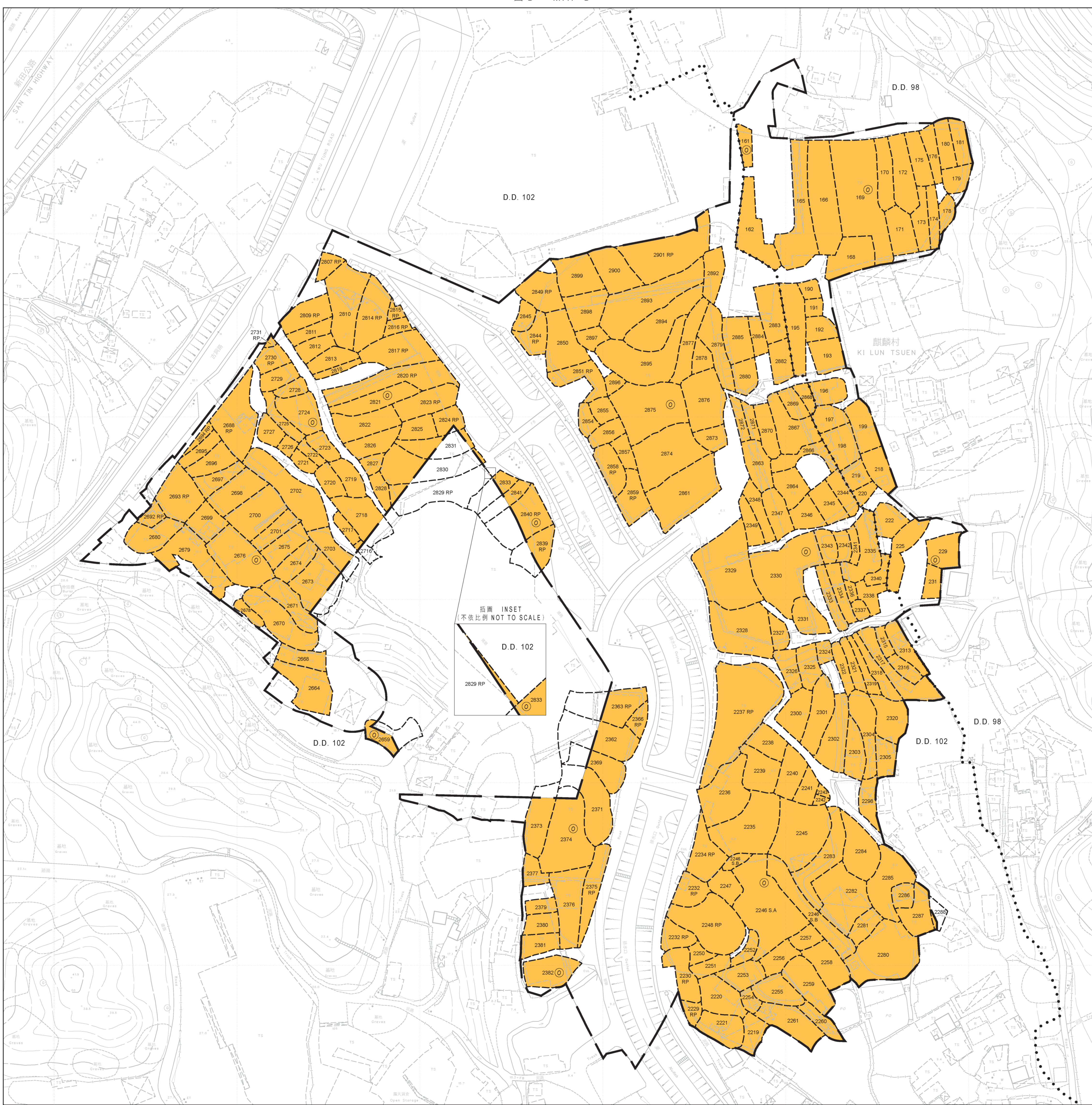


圖 D MAP D



比例尺 SCALE 1:1 000  
metres 20 0 20 40 60 80 100 metres

待予取回土庫的面積 Area of Land to be Resumed			
文區劃分 D.D. No.	地段編號 Lot No.	平方米(數) sq.metres	平方呎(約數) sq.ft.
99	161	181.9	1742
99	162	536.1	5803
99	165	930.8	10019
99	166	930.8	10019
99	168	445.2	4792
99	169	1469.9	15852
99	170	323.8	3485
99	171	404.7	4359
99	172	498.6	5377
99	173	202.3	2178
99	174	242.8	2614
99	175	242.8	2614
99	176	202.3	2178
99	178	121.4	1307
99	179	202.3	2178
99	180	202.3	2178
99	181	242.8	2614
99	182	121.4	1307
99	183	405	436
99	182	242.8	2614
99	183	202.3	2178
99	185	528.1	5693
99	187	242.8	2614
99	188	364.2	3920
99	189	323.8	3485
99	218	323.8	3485
99	219	121.4	1307
99	220	121.4	1307
99	222	242.8	2614
99	225	307.6	3321
99	229	283.3	3048
99	231	181.9	1962
99	669 RP (E/D Portion)	154.6	1664
99	674 RP (E/D Portion)	699.6	7505
99	729 S.E (E/D Portion)	3900.2	42343
99	733 S.F (E/D Portion)	512.2	5481
99	733 S.F (E/D Portion)	641.4	6904
99	736 RP (E/D Portion)	2495.9	26952
99	736 RP (E/D Portion)	520.0	5598
99	736	930.8	10019
99	742 RP (E/D Portion)	2260.0	24448
99	743 RP (E/D Portion)	1112.0	11918
99	744 RP (E/D Portion)	5793.3	62059
99	746 RP (E/D Portion)	25478.1	274240
99	747 RP (E/D Portion)	1192.4	12819
99	748 RP (E/D Portion)	687.9	7374
99	750 RP (E/D Portion)	4293.3	46146
99	763 (E/D Portion)	33133.0	356959
99	764 RP (E/D Portion)	42746.6	460134
99	768 RP (E/D Portion)	7158.2	77006
99	769 S.A RP (Formerly known as 769 S.A)	1956.2	21100
99	769 S.F (Formerly known as 769 S.F)	723.0	7782
99	769 S.I (Formerly known as 769 S.I)	72.1	776
99	769 S.J (Formerly known as 769 S.J)	186.9	2012
99	769 RP (E/D Portion)	207793.0	2236660
99	774 RP	522.8	5639
102	2219	242.8	2614
102	2220	485.6	5227
102	2221	323.8	3485
102	2225 RP	81	869
102	2226 RP	237.8	2566
102	2227 RP	42.3	452
102	2228 RP	423.0	4532
102	2229	323.8	3485
102	2236	647.5	6970
102	2237 RP	1364.3	14660
102	2238	204	2197
102	2239	404.7	4359
102	2240	364.2	3920
102	2241	202.3	2178
102	2242	40.5	436
102	2243	40.5	436
102	2245	930.8	10019
102	2248 S.A	1204.6	12943
102	2248 S.B	687.9	7374
102	2249	283.3	3048
102	2248 RP	899.6	9623
102	2250	121.4	1307
102	2251	121.4	1307
102	2252	80.9	871
102	2253	283.3	3048
102	2254	80.9	871
102	2255	364.2	3920
102	2256	323.8	3485
102	2257	80.9	871
102	2258	404.7	4359
102	2259	445.2	4792
102	2260	181.9	1962
102	2261	498.6	5377
102	2262	404.7	4359
102	2263	930.8	10019
102	2264	404.7	4359
102	2265	181.9	1962
102	2266	121.4	1307
102	2267	404.7	4359
102	2268 (E/D Portion)	17.7	191
102	2269	283.3	3048
102	2270	404.7	4359
102	2271	445.2	4792
102	2272	323.8	3485
102	2273	181.9	1962
102	2274	181.9	1962
102	2275	364.2	3920
102	2276	121.4	1307
102	2277	202.3	2178
102	2278	181.9	1962
102	2279	80.9	871
102	2280	202.3	2178
102	2281	181.9	1962
102	2282	80.9	871
102	2283	404.7	4359
102	2284	323.8	3485
102	2285	404.7	4359
102	2286	181.9	1962
102	2287	80.9	871
102	2288	181.9	1962
102	2289	364.2	3920
102	2290	323.8	3485
102	2291	181.9	1962
102	2292	80.9	871
102	2293	404.7	4359
102	2294	40.5	436
102	2295	40.5	436
102	2296	121.4	1307
102	2297	80.9	871
102	2298	121.4	1307
102	2299	181.9	1962
102	2300	80.9	871
102	2301	181.9	1962
102	2302	181.9	1962
102	2303	364.2	3920
102	2304	121.4	1307
102	2305	202.3	2178
102	2306	202.3	2178
102	2307	181.9	1962
102	2308	80.9	871
102	2309	1123.1	12197
102	2310	80.9	871
102	2311	80.9	871
102	2312	181.9	1962
102	2313	181.9	1962
102	2314	80.9	871
102	2315	121.4	1307
102	2316	121.4	1307
102	2317	364.2	3920
102	2318	181.9	1962
102	2319	121.4	1307
102	2320	364.2	3920
102	2321	121.4	1307
102	2322	202.3	2178
102	2323	181.9	1962
102	2324	202.3	2178
102	2325	202.3	2178
102	2326	202.3	2178
102	2327	181.9	1962
102	2328	80.9	871
102	2329	1123.1	12197
102	2330	80.9	871
102	2331	364.2	3920
102	2332	181.9	1962
102	2333	80.9	871
102	2334	80.9	871
102	2335	445.2	4792
102	2336	40.5	436
102	2337	40.5	436
102	2338	40.5	436
102	2340	121.4	1307
102	2341	80.9	871
102	2342	181.9	1962
102	2343	181.9	1962
102	2344	202.3	2178
102	2345	242.8	2614
102	2346	121.4	1307
102	2347	242.8	2614
102	2348	242.8	2614
102	2349	181.9	1962
102	2362 (E/D Portion)	388.9	4196
102	2363 RP (E/D Portion)	360.0	3863
102	2364 RP (E/D Portion)	141.0	1518
102	2369 (E/D Portion)	287.6	3093
102	2371 (E/D Portion)	527.9	5682
102	2373 (E/D Portion)	396.0	4263
102	2374 (E/D Portion)	823.1	8861
102	2375 RP (E/D Portion)	395.5	4244
102	2376	565.5	6068
102	2377	202.3	2178
102	2379	80.9	871
102	2380	242.8	2614
102	2381	202.3	2178
102	2382 (E/D Portion)	202.3	2178
102	2383	181.9	1962
102	2384	485.6	5227
102	2385	181.9	1962
102	2386	181.9	1962
102	2387	181.9	1962
102	2388	364.2	3920
102	2389	364.2	3920
102	2390	364.2	3920
102	2391	364.2	3920
102	2392	364.2	3920
102	2393	364.2	3920
102	2394	364.2	3920
102	2395	364.2	3920
102	2396	364.2	3920
102	2397	364.2	3920
102	2398	364.2	3920
102	2399	364.2	3920
102	2400	364.2	3920
102	2401	364.2	3920
102	2402	364.2	3920
102	2403	364.2	3920
102	2404	364.2	3920
102	2405	364.2	3920
102	2406	364.2	3920
102	2407	364.2	3920
102	2408	364.2	3920
102	2409	364.2	3920
102	2410	364.2	3920
102	2411	364.2	3920
102	2412	364.2	3920
102	2413	364.2	3920
102	2414	364.2	3920
102	2415	364.2	3920
102	2416	364.2	3920
102	2417	364.2	3920
102	2418	364.2	3920
102	2419	364.2	3920
102	2420	364.2	3920
102	2421	364.2	3920
102	2422	364.2	3920
102	2423	364.2	3920
102	2424	364.2	3920
102	2425	364.2	3920
102	2426	364.2	3920
102	2427	364.2	3920
102	2428	364.2	3920
102	2429	364.2	3920
102	2430	364.2	3920
102	2431	364.2	3920
102	2432	364.2	3920
102	2433	364.2	3920
102	2434	364.2	3920
102	2435	364.2	3920
102	2436	364.2	3920
102	2437	364.2	3920
102	2438	364.2	3920
102	2439	364.2	3920
102	2440	364.2	3920
102	2441	364.2	3920
102	2442	364.2	3920
102	2443	364.2	3920
102	2444	364.2	3920
102	2445	364.2	3920
102	2446	364.2	3920
102	2447	364.2	3920
102	2448	364.2	3920
102	2449	364.2	3920
102	2450	364.2	3920
102	2451	364.2	3920
102	2452	364.2	3920
102	2453	364.2	3920
102	2454	364.2	3920
102	2455	364.2	3920
102	2456	364.2	3920
102	2457	364.2	3920
102	2458	364.2	3920
102	2459	364.2	3920
102	2460	364.2	3920
102	2461	364.2	3920
102	2462	364.2	3920
102	2463	364.2	3920
102	2464	364.2	3920
102	2465	364.2	3920
102	2466	364.2	3920
102	2467	364.2	3920
102	2468	364.2	3920
102	2469	364.2	3920
102	2470	364.2	3920
102	2471	364.2	3920
102	2472	364.2	3920
102	2473	364.2	3920