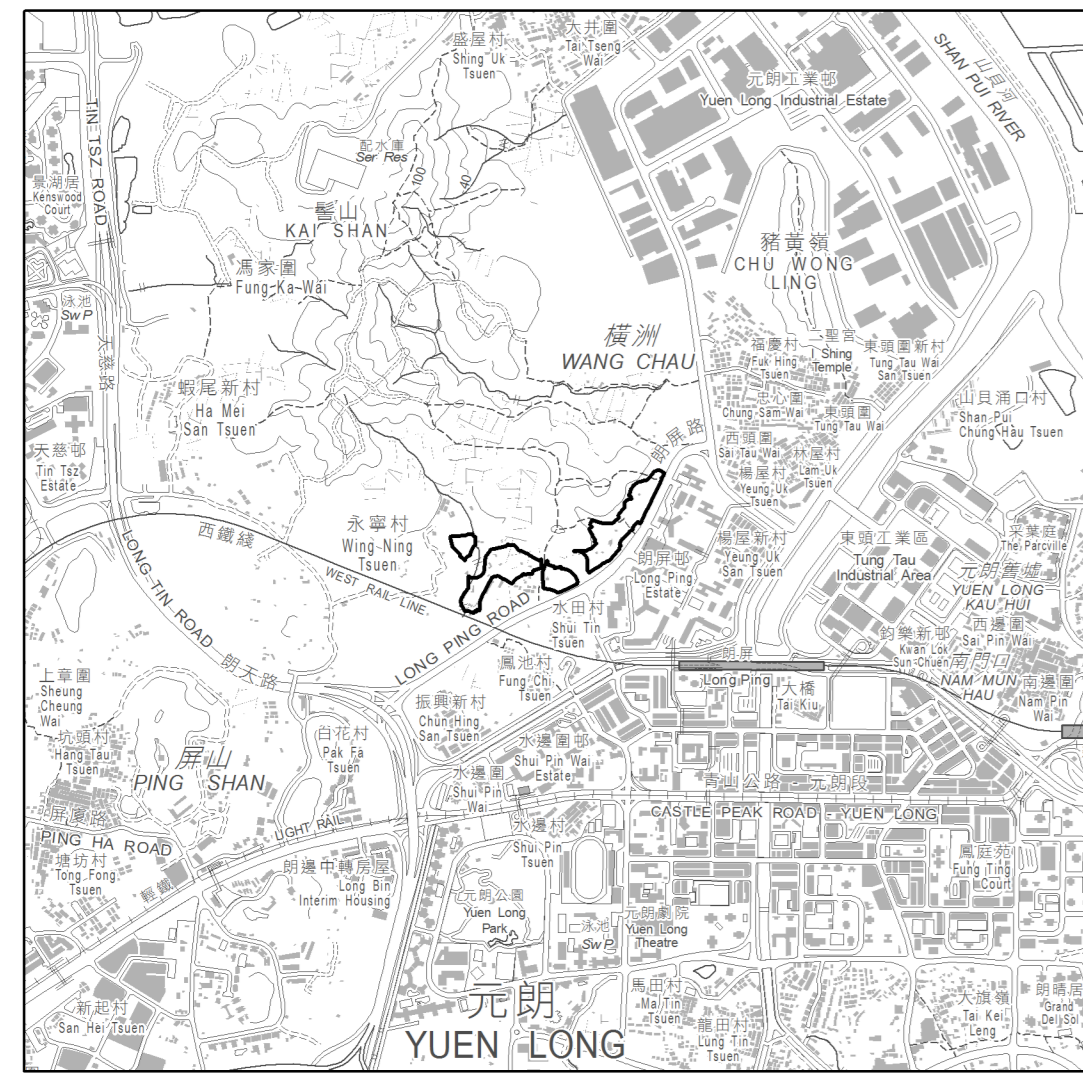


位置 LOCATION



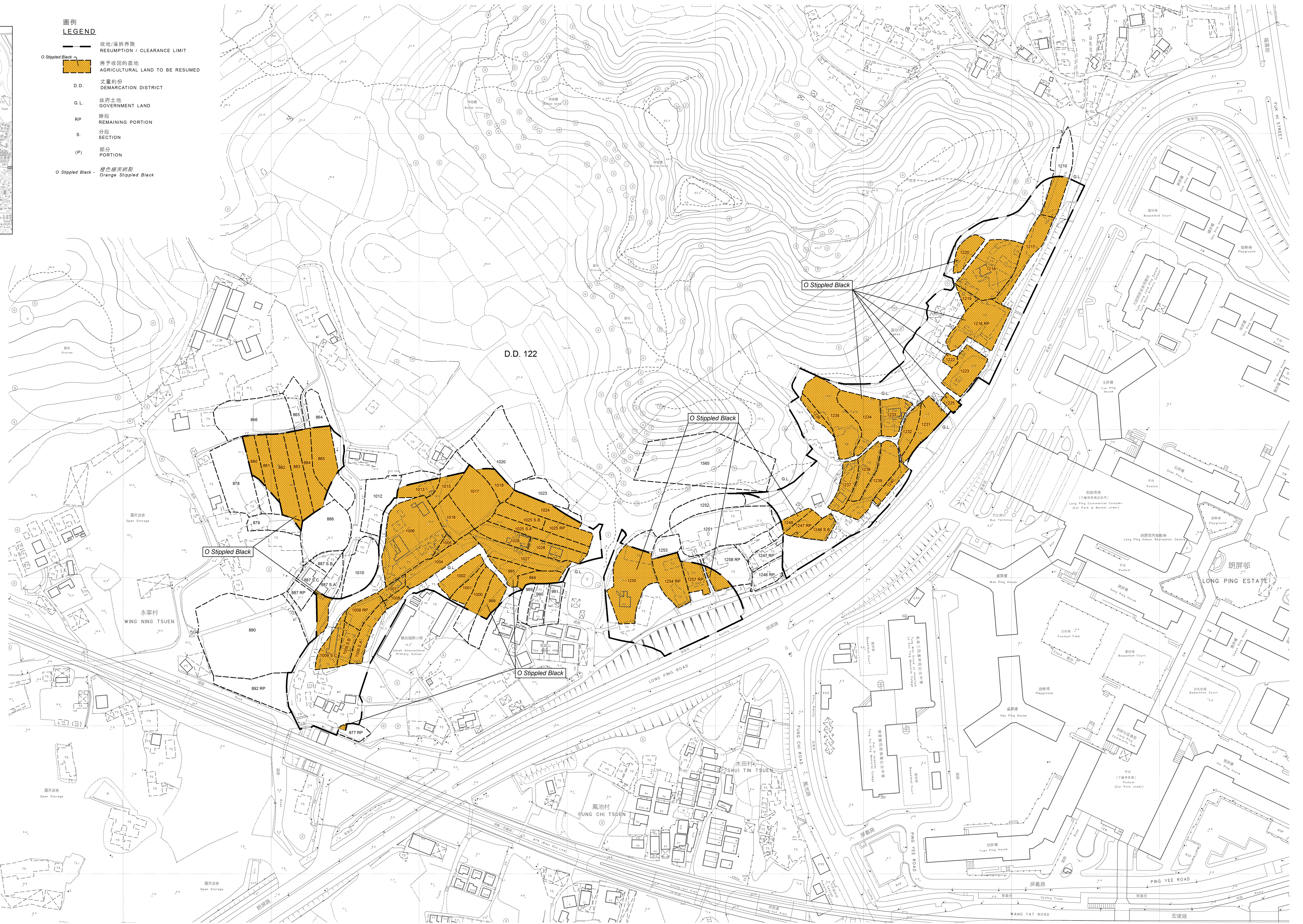
元朗 YUEN LONG

比例 SCALE 1:20 000

圖例 LEGEND

- 收地/遷拆界限 RESUMPTION / CLEARANCE LIMIT
- Stippled Black 將予收回的農地 AGRICULTURAL LAND TO BE RESUMED
- D.D. 丈量約份 DEMARCATION DISTRICT
- G.L. 政府土地 GOVERNMENT LAND
- RP 餘段 REMAINING PORTION
- S. 分段 SECTION
- (P) 部分 PORTION
- Stippled Black 綠色綠帶網點 Orange Stippled Black

將予收回土地的面積 Area to be resumed			
丈量約份 D.D. No.	地段編號 Lot No.	農地 Agricultural Land 平方呎(約數) (sq. ft. (approx.))	農地 Agricultural Land 平方米(約數) (sq. m. (approx.))
122 879	(P)	24.5	264
122 880	(P)	234.6	2525
122 881	(P)	315.9	3400
122 882	(P)	647.5	6970
122 883	(P)	526.1	5663
122 884	(P)	449.4	4837
122 885	(P)	550.2	5922
122 887 S.A	(P)	209.0	2250
122 977 RP	(P)	14.5	156
122 994		323.8	3485
122 995		293.3	3049
122 999	(P)	282.3	3039
122 1000	(P)	274.9	2959
122 1001		202.3	2178
122 1002		364.2	3920
122 1004		485.6	5227
122 1005		80.9	871
122 1006		1659.2	17860
122 1007		80.9	871
122 1008		80.9	871
122 1009 S.A		242.8	2614
122 1009 S.B		283.3	3049
122 1009 S.C		323.8	3485
122 1009 RP		323.8	3485
122 1013	(P)	190.1	2046
122 1015	(P)	219.6	2364
122 1016		445.2	4792
122 1017	(P)	890.3	9583
122 1018	(P)	232.6	2504
122 1024	(P)	337.4	3632
122 1025 S.A		404.7	4356
122 1025 S.B		242.8	2614
122 1025 RP		242.8	2614
122 1026		323.8	3485
122 1027		607.0	6534
122 1028		364.2	3920
122 1210	(P)	299.3	3214
122 1216 RP		896.7	9652
122 1217		566.5	6098
122 1218		1011.7	10890
122 1219		80.9	871
122 1220		283.3	3049
122 1222		40.5	436
122 1223		607.0	6534
122 1225		80.9	871
122 1231		526.1	5663
122 1232		323.8	3485
122 1233		323.8	3485
122 1234		566.5	6098
122 1235		1011.7	10890
122 1236		161.8	1742
122 1237		404.7	4356
122 1238		283.3	3049
122 1239		647.5	6970
122 1240		202.3	2178
122 1248 S.B		199.2	2037
122 1247 RP	(P)	170.8	1838
122 1248	(P)	86.9	936
122 1254 RP		614.2	6611
122 1255	(P)	1063.0	11442
122 1257 RP	(P)	338.8	3647
122 1258 RP	(P)	134.7	1450
總面積 TOTAL AREA		23670.1	254786



比例尺 SCALE 1:1 000  
metres 20 0 20 40 60 80 100 metres

只作識別用  
FOR IDENTIFICATION PURPOSES ONLY

SIGNED  
(趙莉 CHIU Lee-lee, Lily)  
元朗地政專員 District Lands Officer, Yuen Long  
日期 Date 24 MAY 2016

地政總署 元朗地政處  
District Lands Office, Yuen Long  
Lands Department  
製圖及測量部  
Plan Prepared by District Survey Office, Yuen Long  
© 2016 地政總署/地政處 - 版權保留 - Hong Kong SAR Government

收地圖則  
收回土地條例(第124章)  
收回土地以便進行元朗橫洲發展計劃  
RESUMPTION PLAN  
LANDS RESUMPTION ORDINANCE (CHAPTER 124)  
RESUMPTION OF LAND FOR DEVELOPMENT AT WANG CHAU, YUEN LONG

檔案編號 File No. DLOYL 6/YRN/2013C, DSO/YL/13/26/161 P.5  
測量圖編號 Survey Sheet No. 6-NW-4C, 4D, 9A & 9B  
工程編號 Engineering Drg. No. HPD/HWC/SP001-002 (土木工程師簽署) (CEDD)  
圖則編號 PLAN No. YLM8900