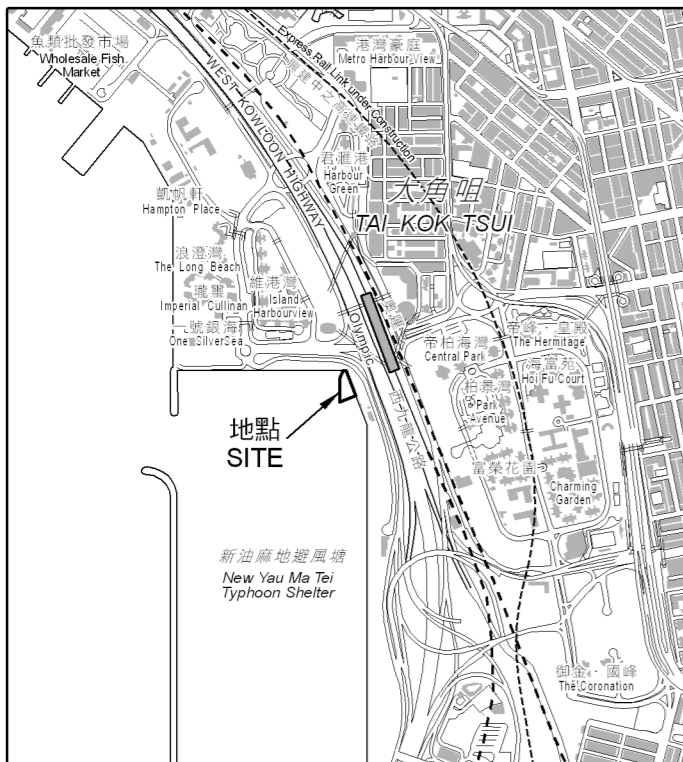


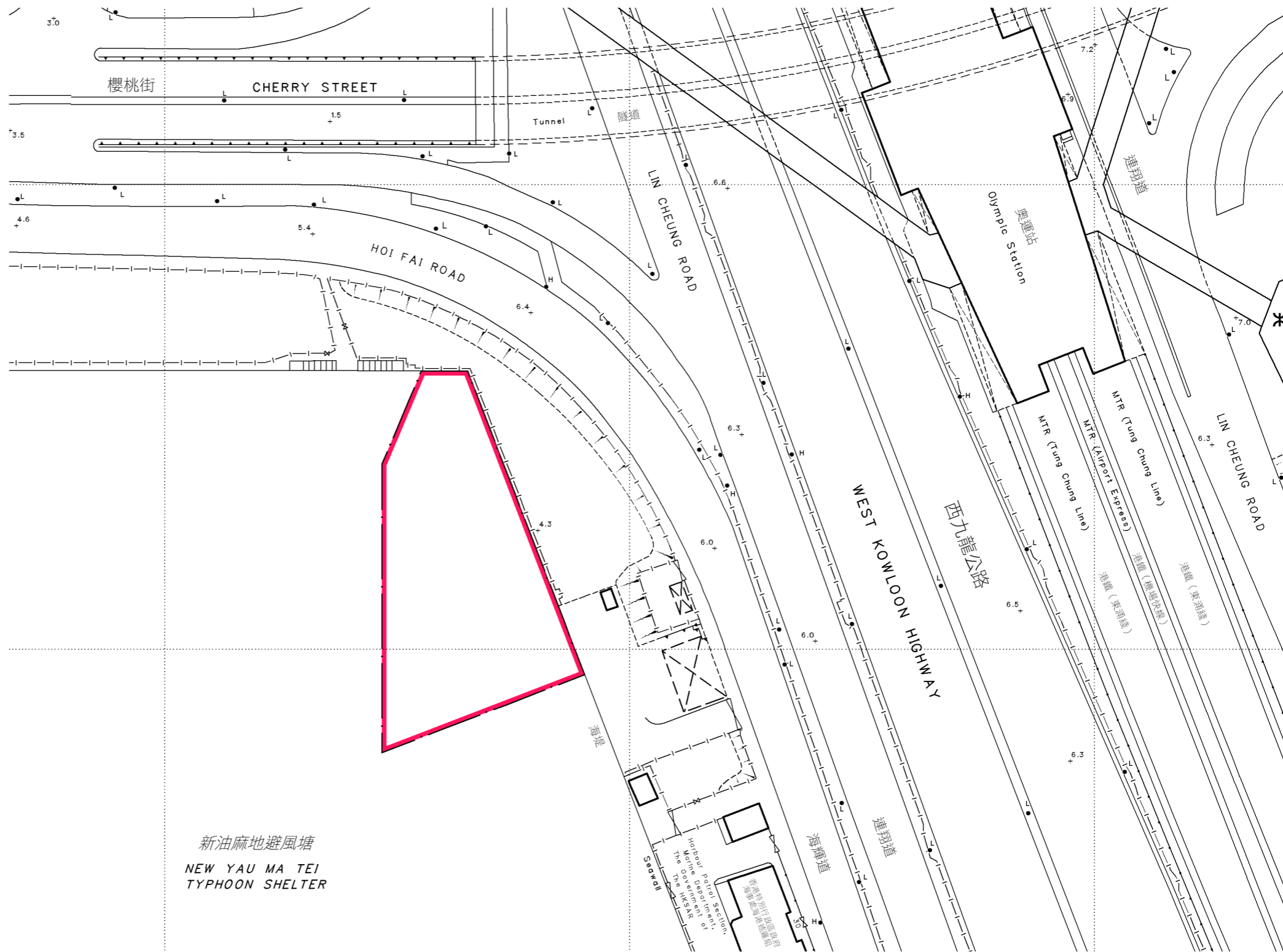
位置 LOCATION



比例 SCALE 1:20 000

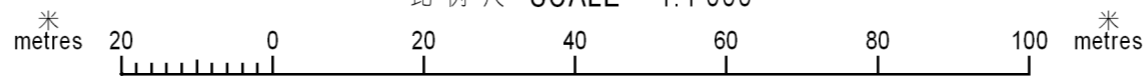
圖例 LEGEND

 受影響的前濱及海床範圍
FORESHORE AND SEA-BED AFFECTED



以紅色邊線標示的面積約為 2 310 平方米 EDGED RED AREA 2 310 SQUARE METRES (ABOUT)

比例尺 SCALE 1:1 000



Signed

C.S. Mills

副署長(專業事務) Deputy Director / Specialist

地政總署 21 / 07 / 2014

Lands Department

圖則由九龍測量處繪製

Plan Prepared by District Survey Office, Kowloon

© 香港特別行政區政府 版權所有 Copyright reserved - Hong Kong SAR Government

前濱及海床(填海工程)條例(第127章)

工務計劃項目第4380DS號

在櫻桃街箱形雨水渠近新油麻地避風塘興建旱流截取設施

FORESHORE AND SEA-BED (RECLAMATIONS) ORDINANCE (CHAPTER 127)

PUBLIC WORKS PROGRAMME ITEM No. 4380DS

CONSTRUCTION OF DRY WEATHER FLOW INTERCEPTOR

AT CHERRY STREET BOX CULVERT NEAR NEW YAU MA TEI TYPHOON SHELTER

檔案編號 File No. DSO/K W647 II, KW MC 126 II

測量圖編號 Survey Sheet No. 11-NW-18D

發展藍圖編號 Layout Plan No. ---

參考圖編號 Reference Plan No.382956/B&V/GAZ/001

圖則編號 PLAN No. KM8937

日期 Date: 11/09/2013