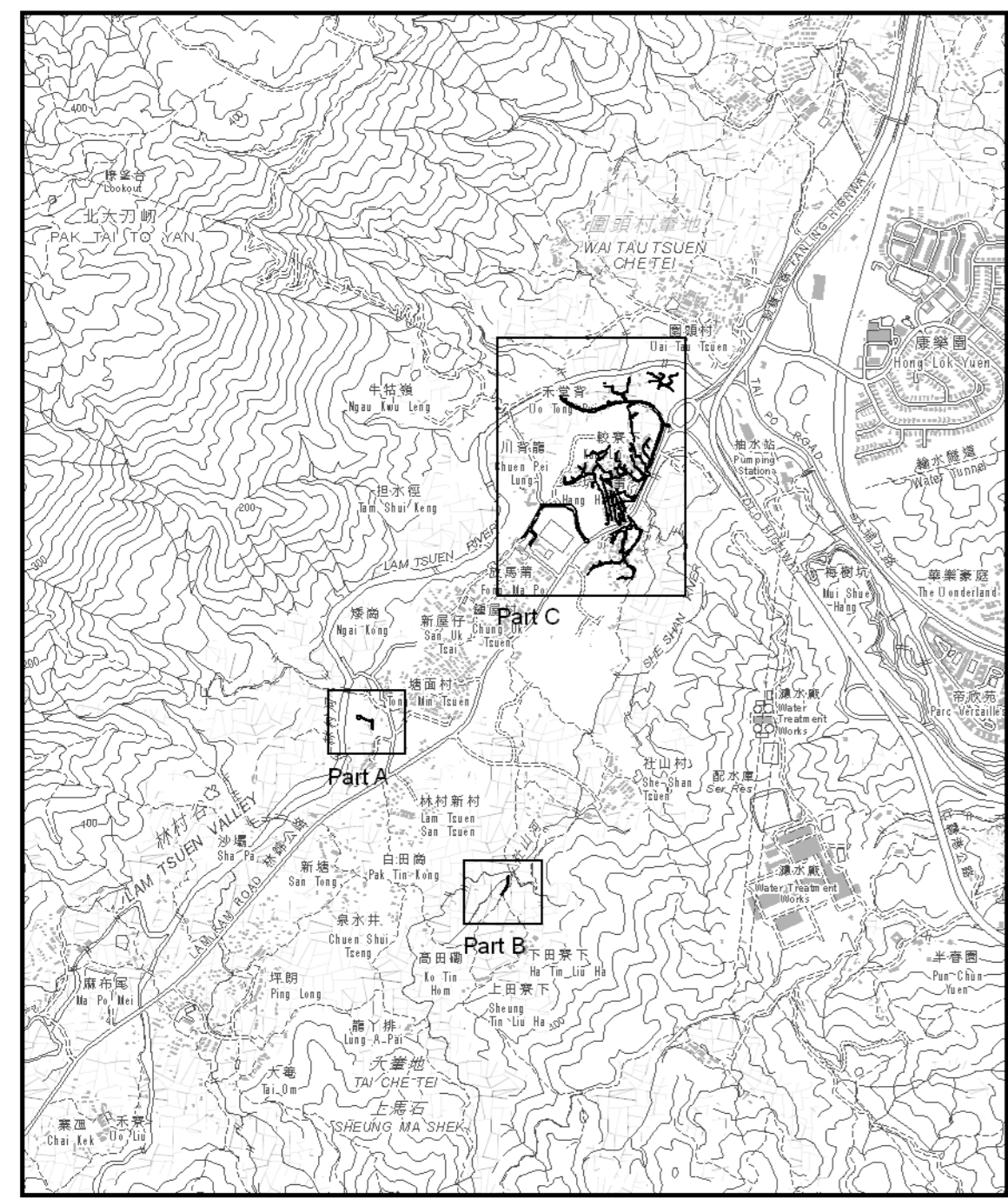


位置 LOCATION



比例 SCALE 1:20000

圖例 LEGEND

- Resumption / Clearance Limit
Agricultural Land to be Resumed
Lot Boundary
Demarcation District Boundary
Demarcation District
Taxlord Lot
Government Land
Remaining Portion
Section
Sub-section
Portion

Orange Stippled Black - 橙色虛線黑點

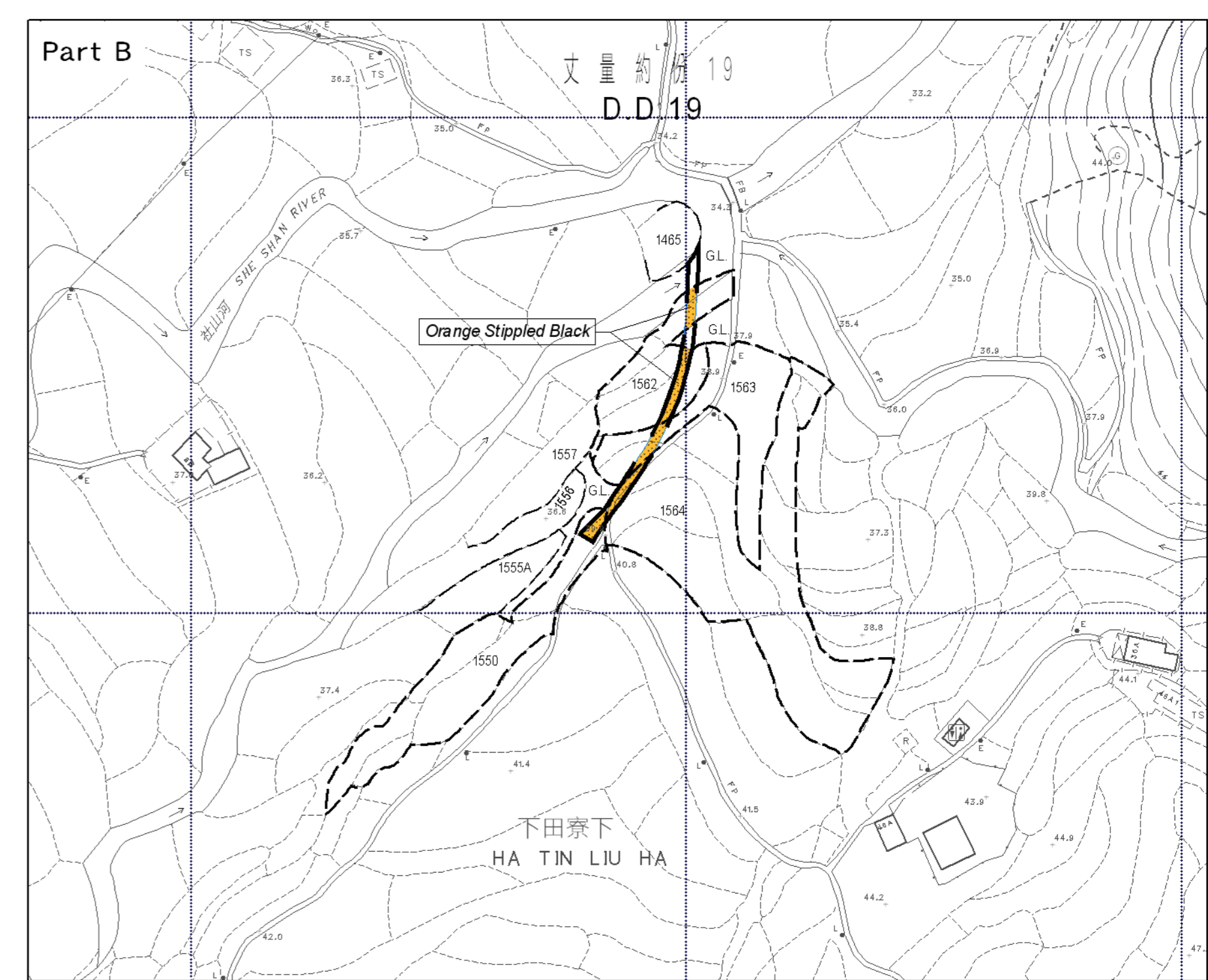
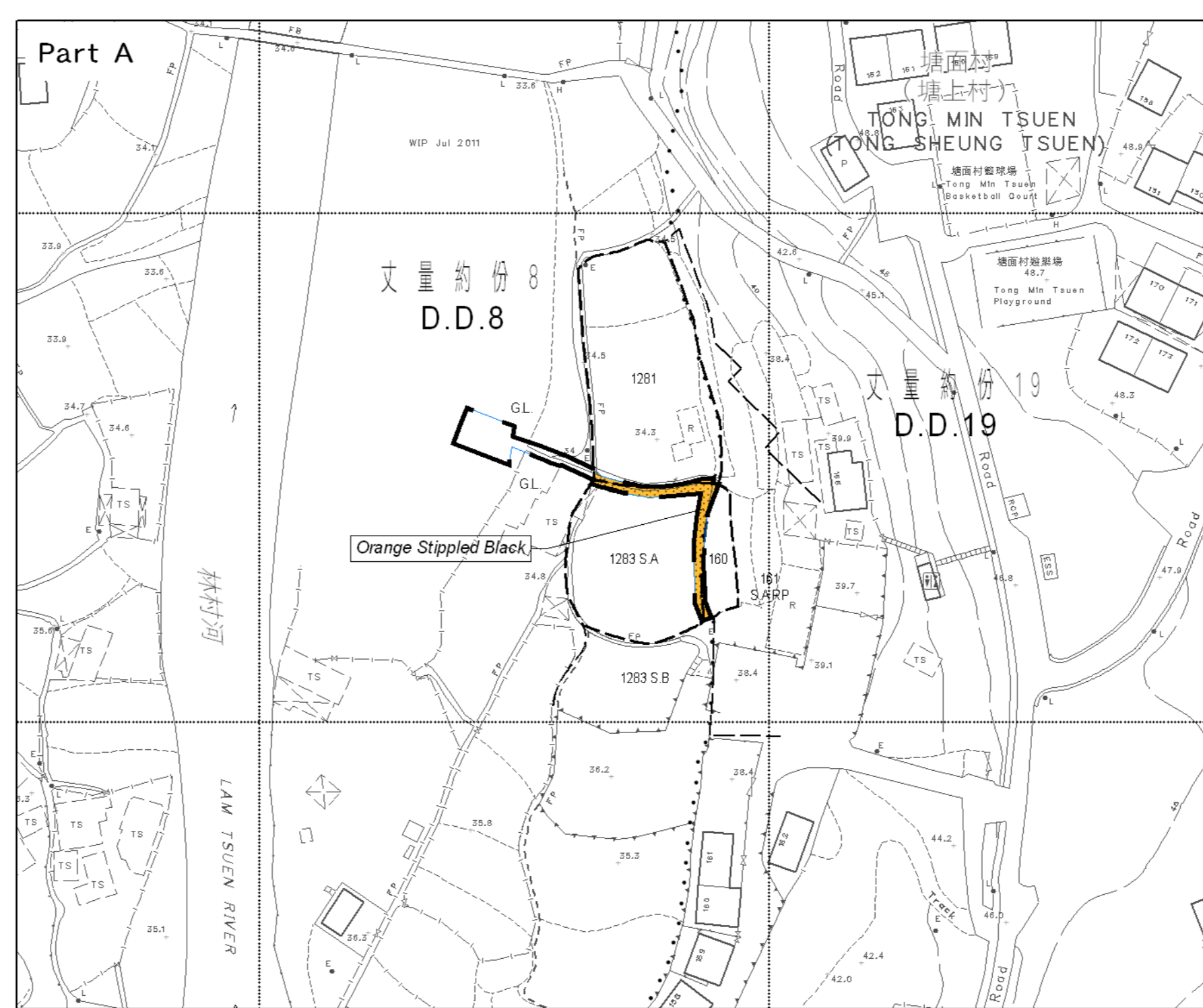
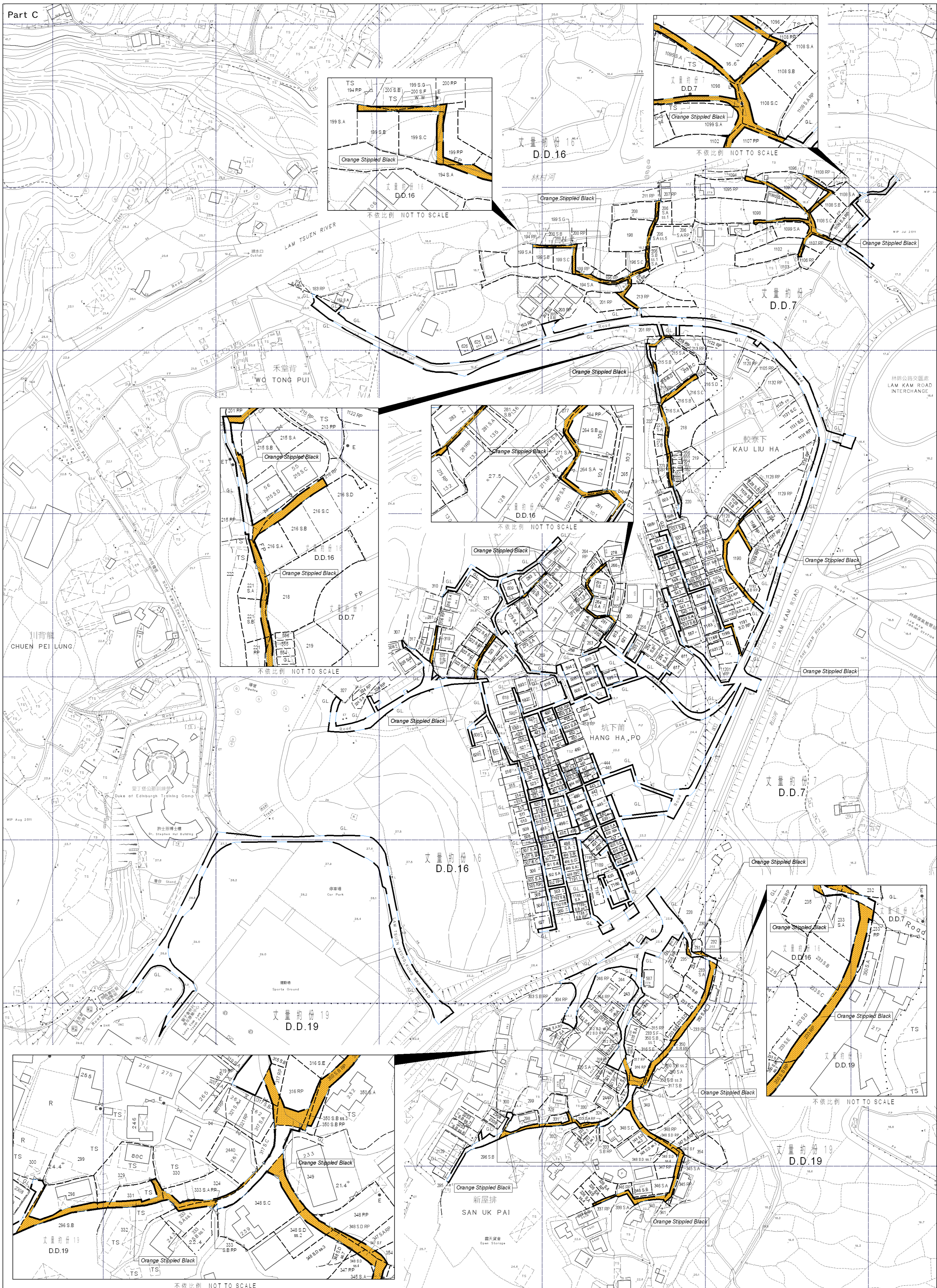


Table with 4 columns: D.D. No., Lot No., Agricultural Land (m²/about), and Remarks. Lists various lots and their areas.

Table with 4 columns: D.D. No., Lot No., Agricultural Land (m²/about), and Building Land (m²/about). Lists various lots and their areas.



比例尺 SCALE 1:1000

只作識別用 FOR IDENTIFICATION PURPOSES ONLY

Signed (李達毅) (Mr. Denis Li)
大埔地政專員 District Lands Officer, Tai Po

地政總署大埔地政處 District Lands Office, Tai Po Lands Department

收地圖則
水污染管制(排污設備)規例(第358章附屬法例)第26條
引用道路(工程、使用及補償)條例(第370章)
工程計劃項目第4332DS號
林村谷污水收集系統
大埔坑下甫、較寮下、新屋排、禾童背、塘上村(餘下部分)及田寮下(餘下部分)鄉村污水收集系統
RESUMPTION PLAN
ROADS (WORKS, USE AND COMPENSATION) ORDINANCE (Chapter 370)
AS APPLIED BY SECTION 26 OF THE WATER POLLUTION CONTROL (SEWERAGE) REGULATION (Chapter 358 Subsidiary Legislation)
PWP ITEM NO. 4332DS
LAM TSUEN VALLEY SEWERAGE
VILLAGE SEWERAGE AT HANG HA PO, KAU LIU HA, SAN UK PAI, WO TONG PUI, TONG SHEUNG TSUEN (REMAINING PART) AND TIN LIU HA (REMAINING PART), TAI PO

檔案編號 File No. DLO/TP 359/TRN/59
測量圖編號 Survey Sheet Nos. 7-NW-2B, 2D, 3A, 3C, 7A & 7B
工程圖編號 Engineering Drg. Nos. 24898/GZ/201A, 202, 203A (渠務署) 204A, 205A, 206 & 207 (DSD)
圖則編號 PLAN No. TPM5172b