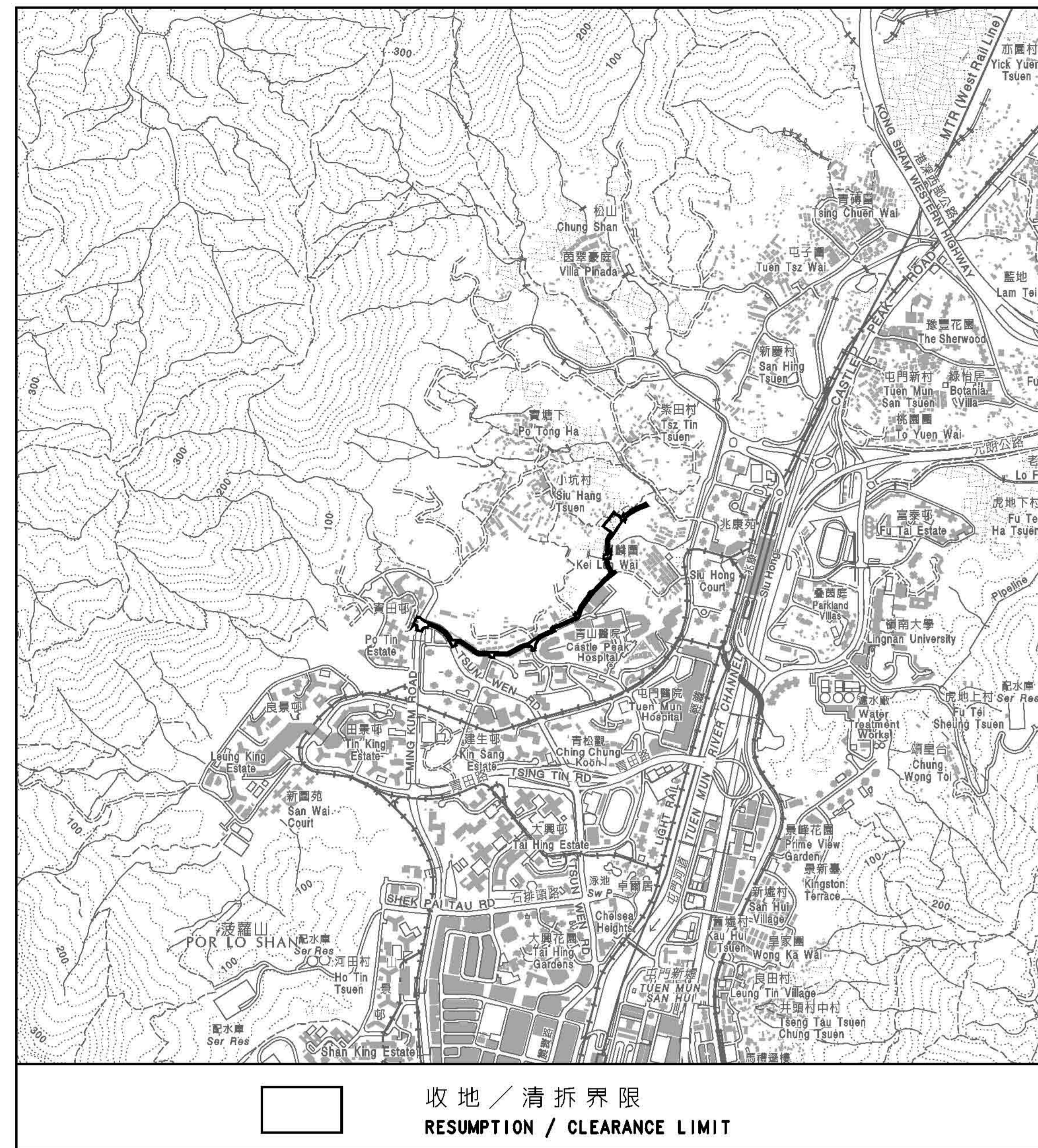


位置 LOCATION



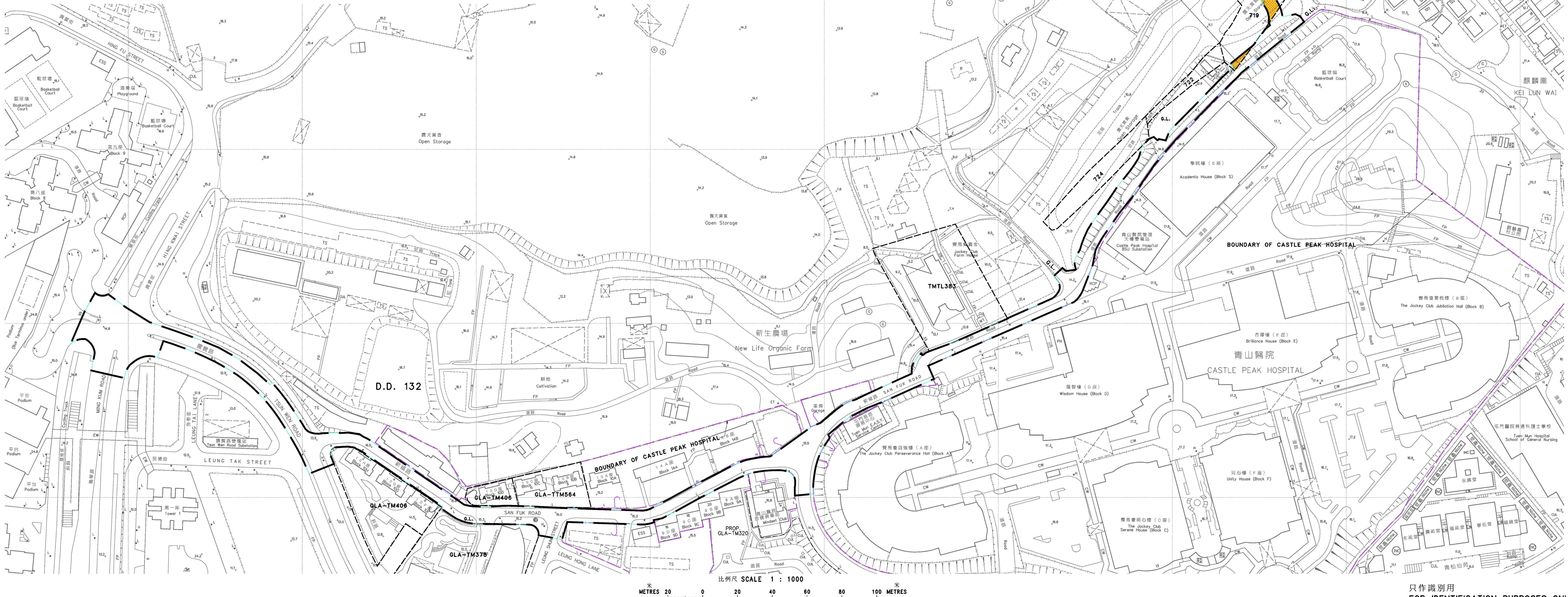
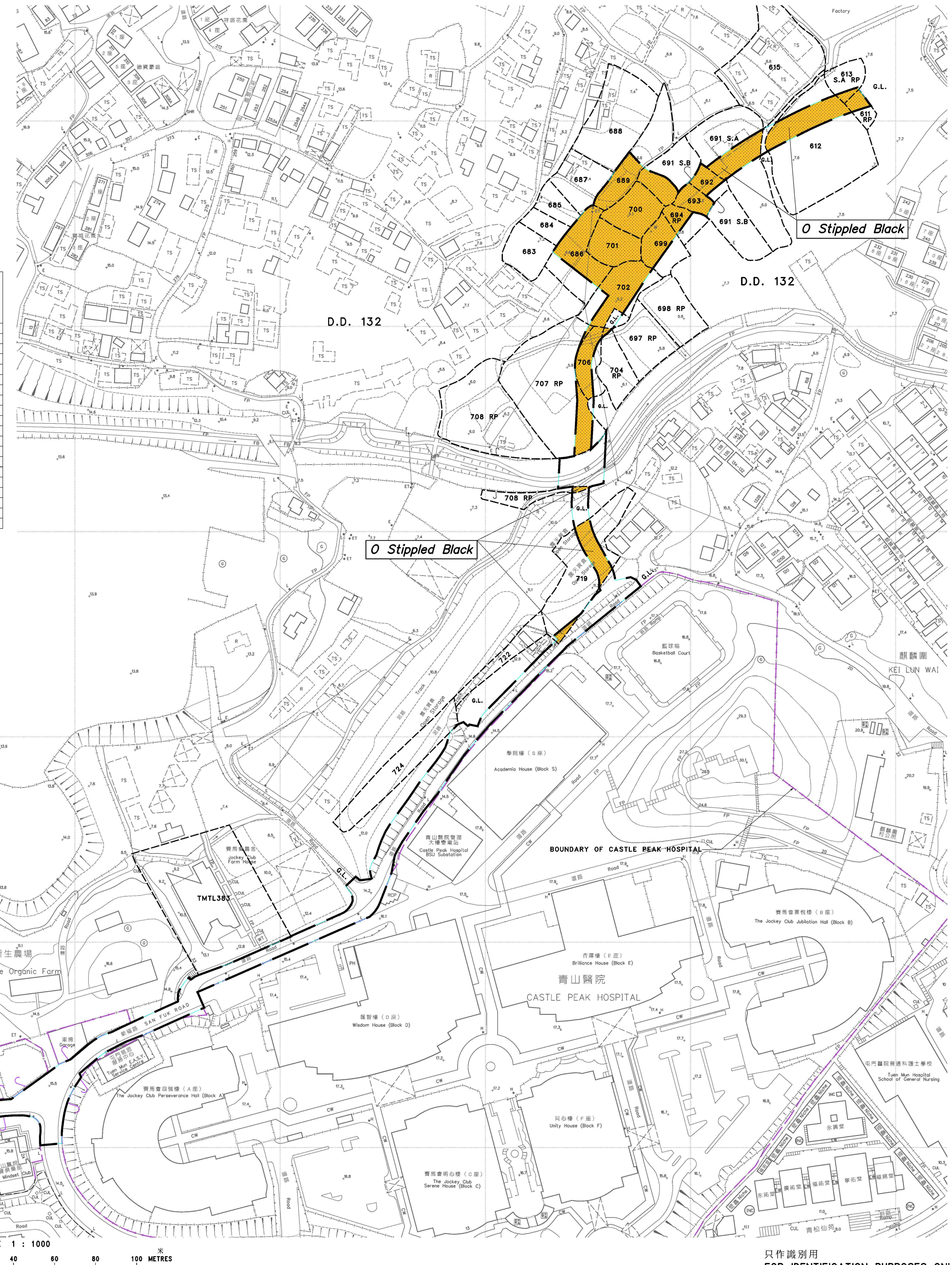
比例 SCALE 1 : 20000

圖例 LEGEND

- Orange Stippled Black
- Agricultural Land to be resumed
- Resumption / Clearance Limit
- D.D.
- RP
- S.
- ss.
- G.L.
- (P)

橙色 stippled black

將收回土地的面積		農地		備註
地塊編號	地塊編號	平方米 (約數)	平方呎 (約數)	
DD No.	LOT No.	m <sup>2</sup> (about)	ft <sup>2</sup> (about)	
132	611 RP (P)	73.5	791	南橋地段第 611 號 (部分) / Formerly described as Lot No. 611 (P)
	612 (P)	430.6	4635	
	613 S.A RP (P)	36.3	391	南橋地段第 613 號 A 分段 (部分) / Formerly described as Lot No. 613 SA (P)
	686 (P)	491.6	5292	
	689 (P)	297.7	3204	
	691 S.A (P)	285.0	3068	
	691 S.B (P)	193.5	2083	
	692 (P)	134.8	1451	
	693 (P)	161.8	1742	
	694 RP (P)	117.7	1267	
	699 (P)	267.6	2880	
	700 (P)	445.2	4792	
	701 (P)	404.7	4356	
	702 (P)	452.7	4873	
	704 RP (P)	10.7	115	
	706 (P)	252.9	2722	
	707 RP (P)	230.1	2477	
	708 RP (P)	17.6	189	
132	719 (P)	268.0	2885	
總面積 TOTAL AREA		4572.0	49213	



比例尺 SCALE 1 : 1000

只作識別用 FOR IDENTIFICATION PURPOSES ONLY

Signed  
 ( 盧錦倫 LO Kam-lun, Alan )  
 屯門地政專員 District Lands Officer, Tuen Mun  
 日期 Date 09/12/2010

地政總署 屯門地政處  
 District Lands Office, Tuen Mun  
 Lands Department  
 圖則由屯門測量處繪製  
 Plan prepared by District Survey Office, Tuen Mun

收地圖則  
 水污染管制 ( 排污設備 ) 規例 ( 第 358 章附屬法例 ) 第 26 條引用  
 道路 ( 工程、使用及補償 ) 條例 ( 第 370 章 )  
 部分工務計劃項目第 7681 CL 號 - 屯門第 54 區的土地開拓、道路及渠務工程第 2 期第 1 B 組工程 - 興建污水泵房及相關壓力污水管道

RESUMPTION PLAN  
 ROADS (WORKS, USE AND COMPENSATION) ORDINANCE (CHAPTER 370)  
 AS APPLIED BY SECTION 26 OF THE WATER POLLUTION CONTROL (SEWERAGE) REGULATION (CHAPTER 358 SUBSIDIARY LEGISLATION)  
 PART OF PWP ITEM No. 7681CL - FORMATION, ROADS AND DRAINS IN AREA 54, TUEN MUN, PHASE 2 PACKAGE 1B - CONSTRUCTION OF SEWAGE PUMPING STATION AND ASSOCIATED RISING MAINS

檔案編號 File No. DL0TM327/CPD/RN/66A & DS0/TM/W2007/35  
 測量圖編號 Survey Sheet No. 5-NE-25D, 5-SE-5B, 6-NW-21C & 6-SW-1A  
 工程圖編號 Engineering Drg. No. LW 7931 ( 土木工程拓展署 ) ( CEDD )  
 圖則編號 PLAN No. TMM2707b